

TECHNICAL CHARACTERISTICS OF THE CERAMIC DISCS:

| | |
|-----------------------|--------------------------------|
| Material: | AL ₂ O ₃ |
| Surface roughness Ra: | 0.3 μm |
| Contact surface area: | 50-80% |

TECHNICAL CHARACTERISTICS OF THE CARTRIDGE:

| | |
|--------------------------------|-------------------------|
| Opening angle: | 20° |
| Mixing angle: | 100° |
| Max temperature: | 90°C/194°F |
| Recommended tightening torque: | 8 Nm / 70 lbf·in |

Pressure test:

| | |
|------------|-------------------------|
| Pneumatic: | 6 bar / 87 psi |
| Hydraulic: | 35 bar / 500 psi |

Flow rate:

(3 bar / 45 psi, test faucet, EN 817)

18.6 l/min / 4.9 gpm without resistance

15.5 l/min / 4.1 gpm with resistance „C”

Endurance test:

| | |
|------------------|----------------|
| EN 817 | 70 000 cycles |
| ASME A 112.18.1M | 500 000 cycles |



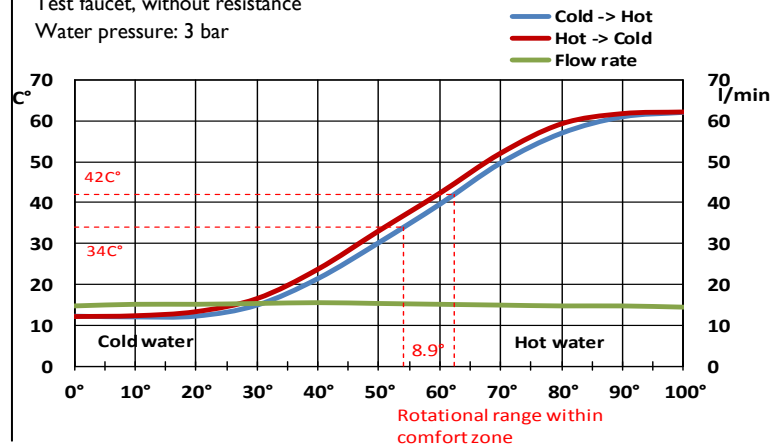
Saves energy by turning on in middle position of lever handle, delivering cold water - adds hot water only as lever is rotated.

Model: NKB-25 Rotate- Clockwise

Model: NKJ-25 Rotate- Anti- Clockwise
Hot/cold water inlet connections must be reversed.

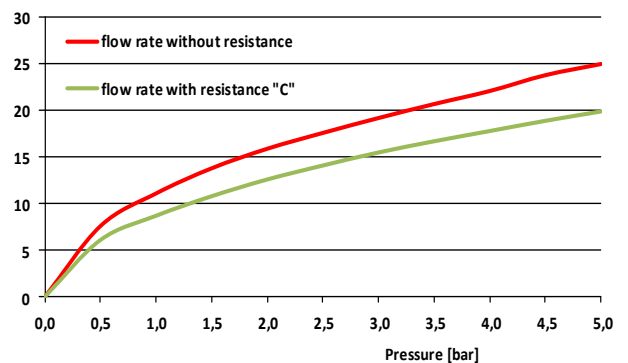
FLOW RATE & HYSTERESIS CURVES

Test faucet, without resistance
Water pressure: 3 bar



FLOW RATE CURVES

Flow rate [l/min]

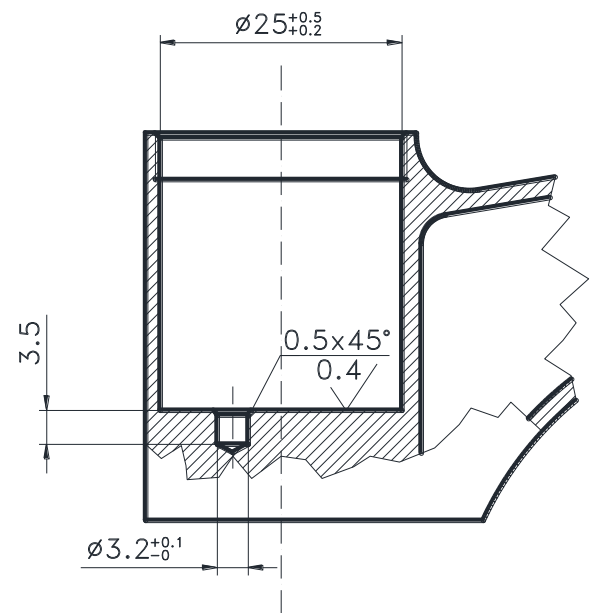
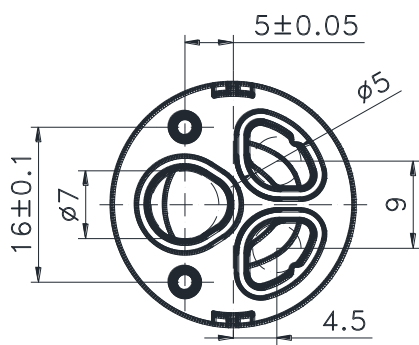
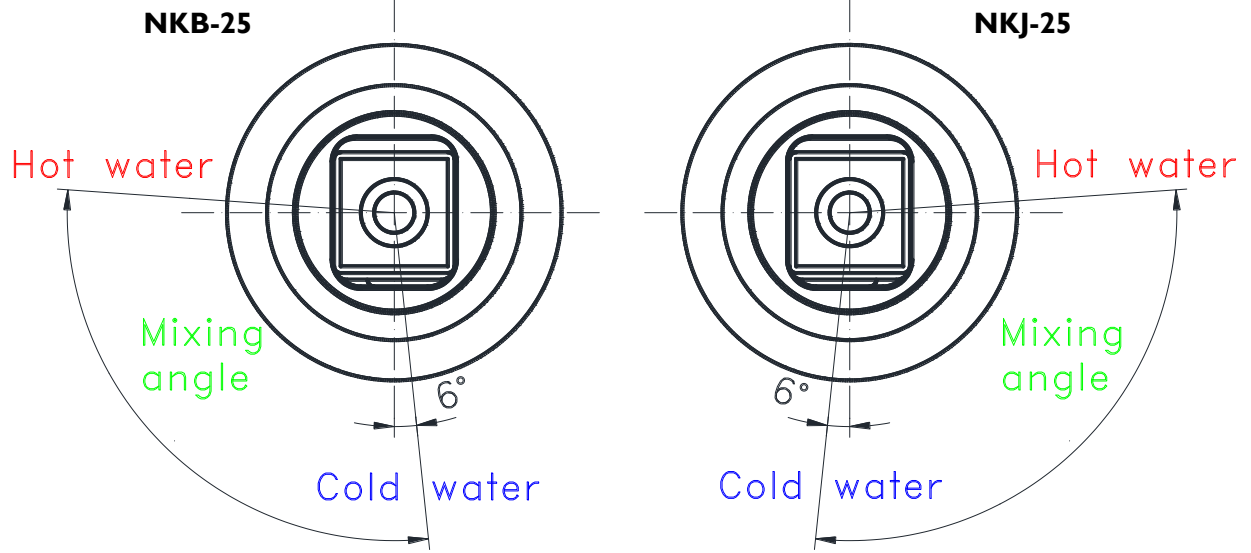


NK-25

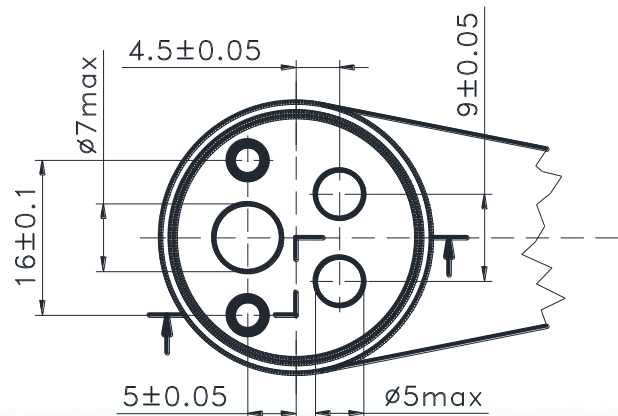
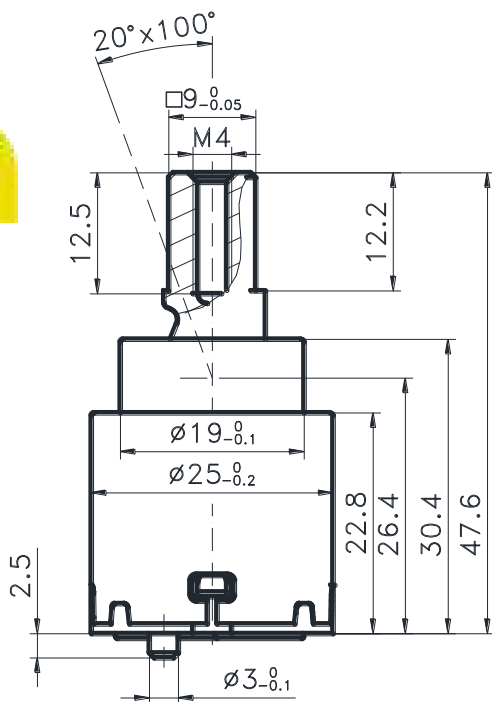
CARTRIDGES

NKB-25 • NKJ-25

MOVING METHOD



NKB-25
NKJ-25



TECHNICAL CHARACTERISTICS OF THE CERAMIC DISCS:

| | |
|-----------------------|------------------------------------|
| Material: | AL₂O₃ |
| Surface roughness Ra: | 0.2 μm |
| Contact surface area: | 50-80% |

TECHNICAL CHARACTERISTICS OF THE CARTRIDGE:

| | |
|------------------|-------------------|
| Opening angle: | 25° |
| Mixing angle: | 90° |
| Max temperature: | 90°C/194°F |

Recommended tightening torque:

12-13 Nm / 106-115 lbf·in

Pressure test:

| | |
|------------|-------------------------|
| Pneumatic: | 6 bar / 87 psi |
| Hydraulic: | 35 bar / 500 psi |

Flow rate:

(3 bar / 45 psi, test faucet, EN 817)

22.3 l/min / 5.9 gpm with resistance „C”

34.6 l/min / 9.1 gpm without resistance

Endurance test:

| | |
|-----------------|----------------|
| EN 817 | 70 000 cycles |
| ASME A 112.18.1 | 500 000 cycles |

Two exclusive features to provide economies of water consumption overall, and of hot water use specifically:

- Saves energy by turning on in middle position of lever handle, delivering cold water - adds hot water only as lever is rotated.
- Saves water because user must override “resistance bump” to obtain high flow - acts as deterrent to unconsciously turning handle onto full flow position regardless of water requirement. Economical flow rate is maximum 9 l/min / 2.4 gpm at 3 bar / 45 psi.

NKJ-35 ECO and NKB-35 ECO

Models NKJ-35A • NKJ-35B • NKJ-35C • NKJ-35D

Rotate-Anti-Clockwise gray hot limit stop

Hot/cold water inlet connections must be reversed.

Models NKB-35A • NKB-35B • NKB-35C • NKB-35D

Rotate-Clockwise black hot limit stop



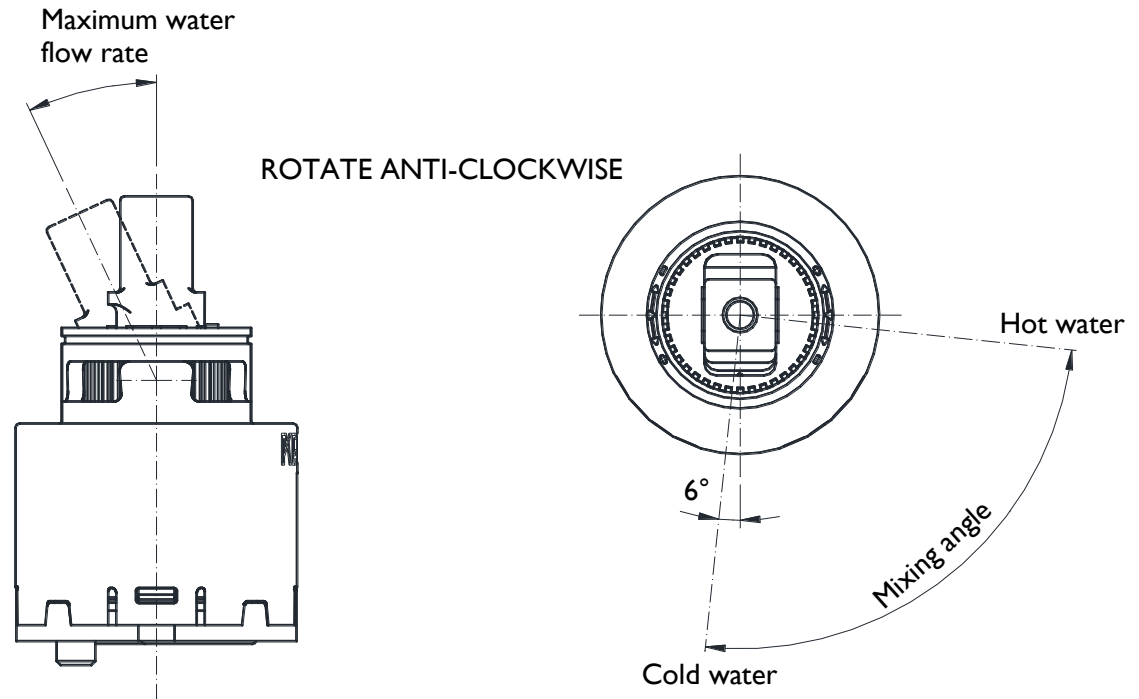
NK-35

CARTRIDGES

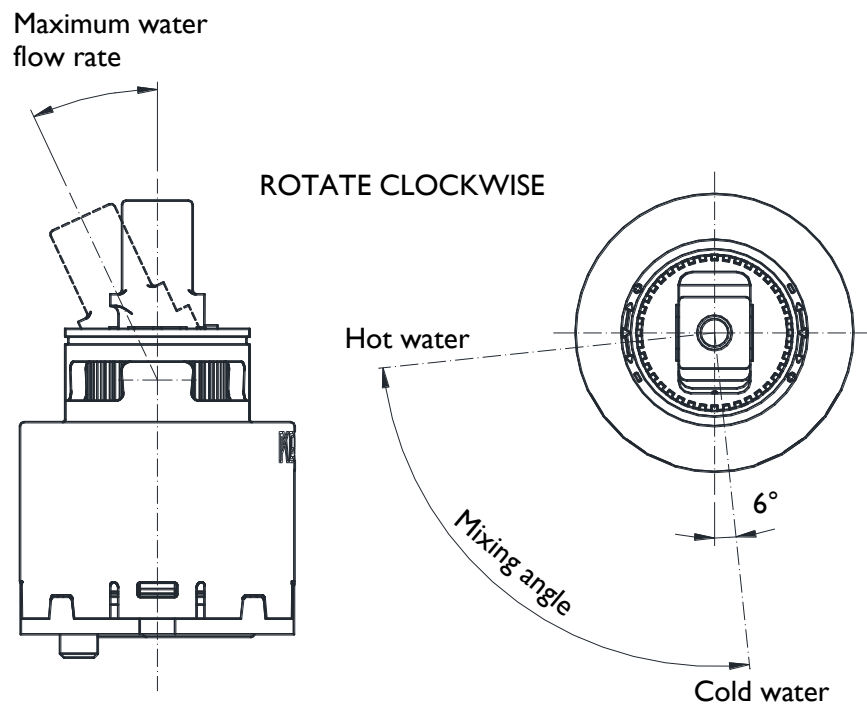
NKJ-35 • NKB-35

THE MOVEMENT RANGE OF THE LEVER

Modell NKJ-35



Modell NKB-35



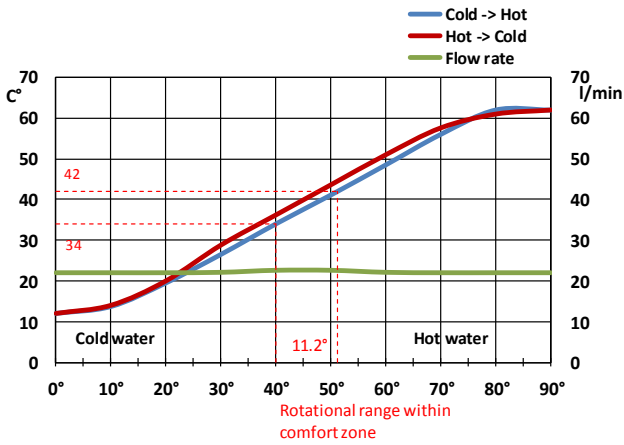
NK-35

CARTRIDGES

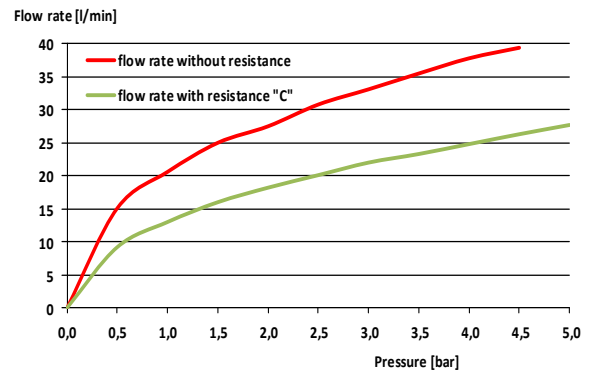
NKJ-35 • NKB-35

FLOW RATE & HYSTERESIS CURVES

Test faucet, resistance „C”
Water pressure: 3 bar

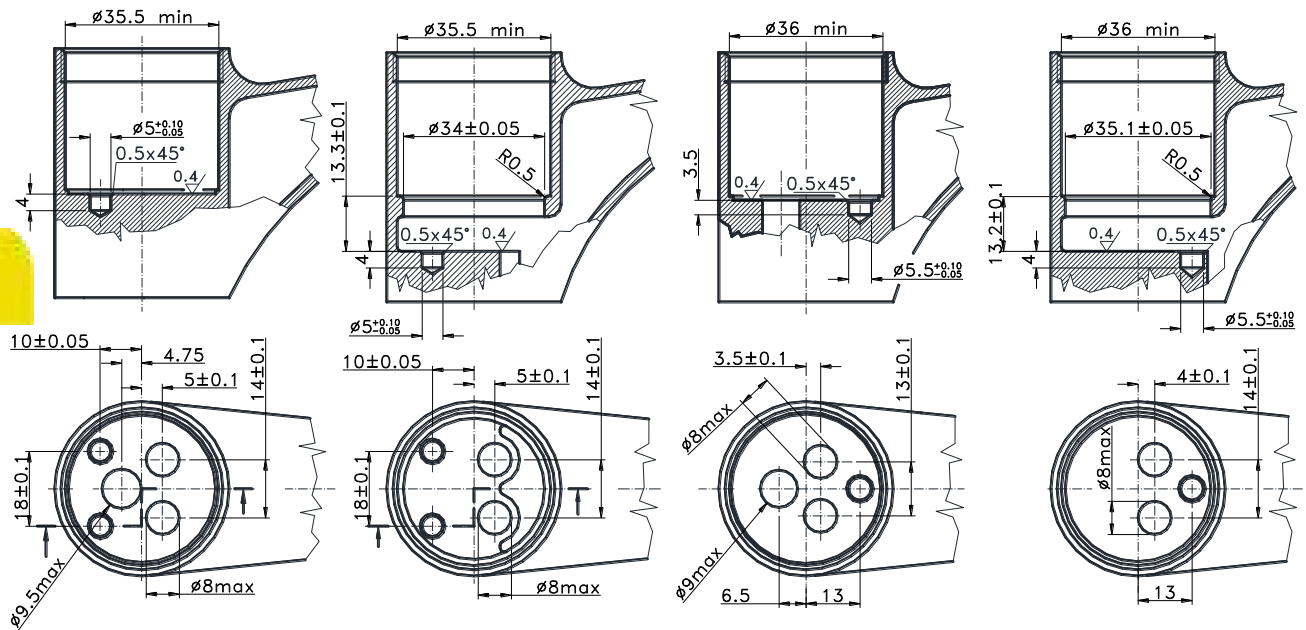


FLOW RATE CURVES



INTERCHANGEABLE WITH 35 MM CONVENTIONAL SINGLE-LEVER CARTRIDGES.

Faucet



NK - 35 A

NK - 35 B

NK - 35 C

NK - 35 D

TECHNICAL CHARACTERISTICS OF THE CERAMIC DISCS:

| | |
|-----------------------|------------------------------------|
| Material: | AL₂O₃ |
| Surface roughness Ra: | 0.2 µm |
| Contact surface area: | 50-80% |

TECHNICAL CHARACTERISTICS OF THE CARTRIDGE:

| | |
|------------------|-------------------|
| Opening angle: | 25° |
| Mixing angle: | 90° |
| Max temperature: | 90°C/194°F |

Recommended tightening torque:

12-13 Nm / 106-115 lbf·in

Pressure test:

| | |
|------------|-------------------------|
| Pneumatic: | 6 bar / 87 psi |
| Hydraulic: | 35 bar / 500 psi |

Flow rate:

(3 bar / 45 psi, test faucet, EN 817)

20.5 l/min / 5.4 gpm with resistance „C”

28 l/min / 7.4 gpm without resistance

Endurance test:

| | |
|-----------------|----------------|
| EN 817 | 70 000 cycles |
| ASME A 112.18.1 | 500 000 cycles |

Exclusive feature to contribute to substantial savings of energy:

Many users often turn on a single-lever faucet by starting with the lever in the mixed position, then moving it to the extreme right when cold water is desired. This initial delivery of warm water represents a waste of energy. With this model the temperature quadrant is shifted so that the normal „six o'clock” position of the lever delivers pure cold water. Thus, if the lever is turned off in the normal middle position, it will always open in the extreme cold setting. Warmer temperatures are delivered as the lever is rotated.

Models NKB-40A • NKB-40B • NKB-42C • NKB-42D

Rotate-Clockwise

black hot limit stop

Models NKJ-40A • NKJ-40B • NKJ-42C • NKJ-42D

Rotate-Anti-Clockwise

grey hot limit stop

Hot/cold water inlet connections must be reversed.



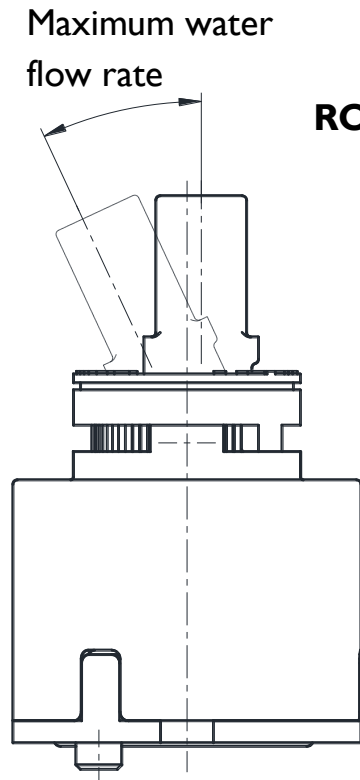
NK-40

CARTRIDGES

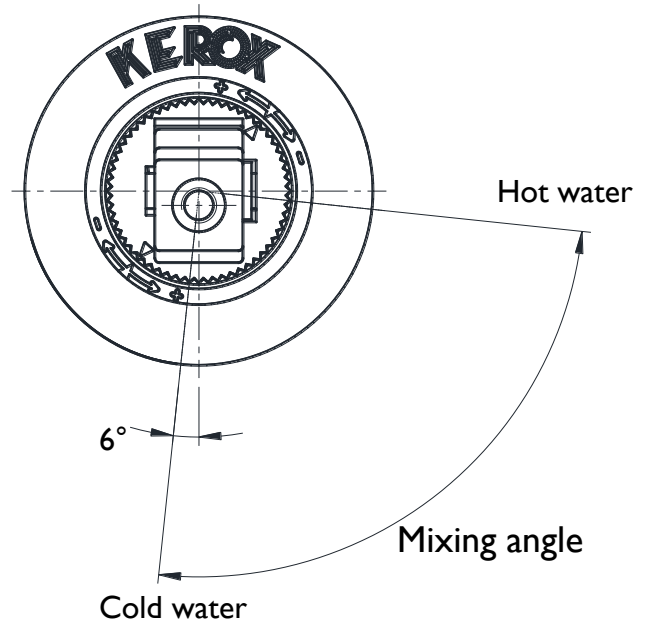
NKJ-40 • NKB-40

THE MOVEMENT RANGE OF THE LEVER

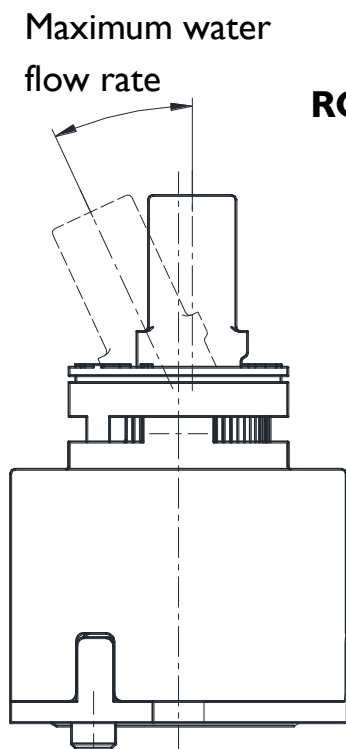
Modell NKJ-40



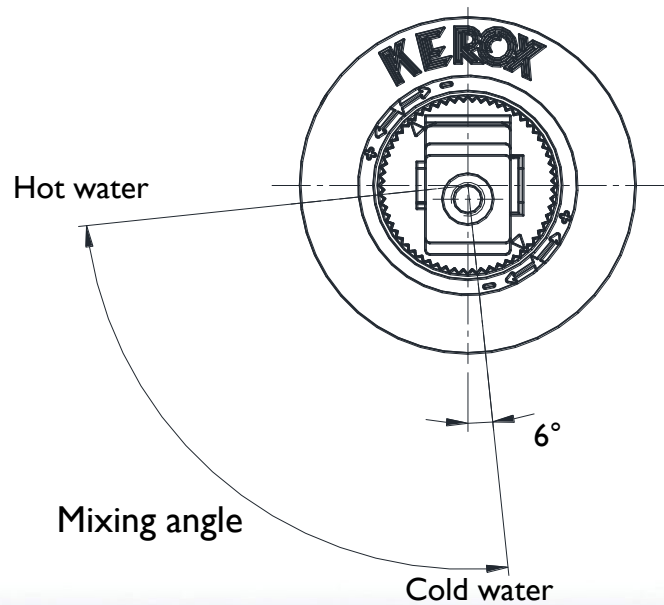
ROTATE-ANTI-CLOCKWISE



Modell NKB-40



ROTATE-CLOCKWISE



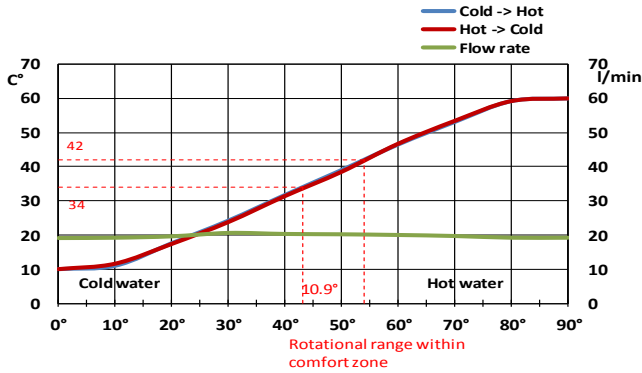
NK-40

CARTRIDGES

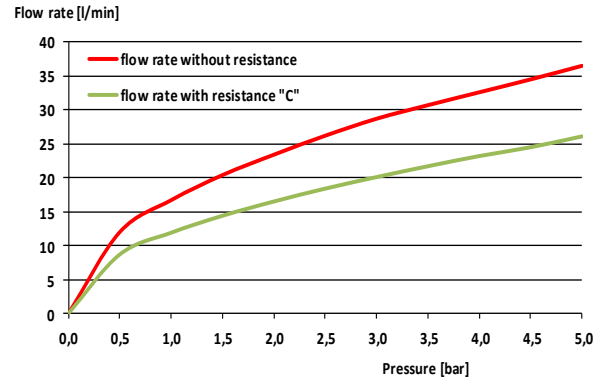
NKJ-40 • NKB-40

FLOW RATE & HYSTERESIS CURVES

Test faucet, resistance „C”
Water pressure: 3 bar

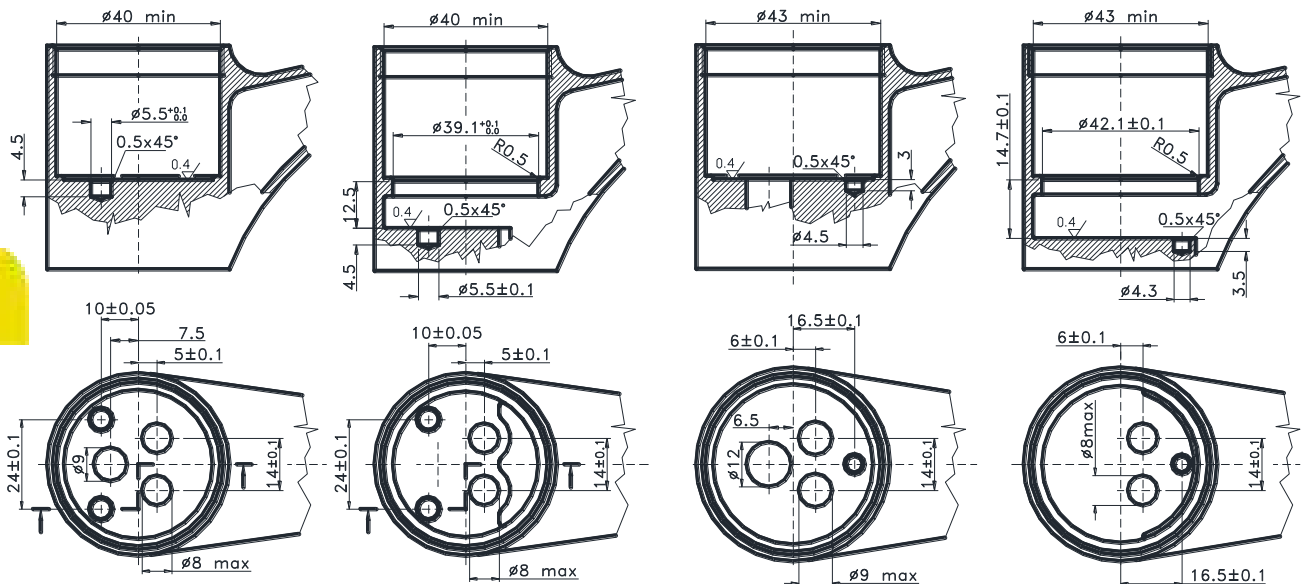


FLOW RATE CURVES



INTERCHANGEABLE WITH 40/42 MM CONVENTIONAL SINGLE-LEVER CARTRIDGES.

Faucet



NK - 40 A

NK - 40 B

NK - 40 C

NK - 40 D