







# Table of Contents

11	INTRODUCTION : Personalized Luxury	<hr/>	
19	WHY TOTO KITCHEN	<hr/>	
	Safety & Durability	19	Space Optimization 27
	Luxurious Finish	23	Attention to Detail 33
37	KITCHEN SERIES : Versatile Design	<hr/>	
	Basic Style 07	38	Unfold Style 08 73
	Basic Style 09	44	Reflection Style 06 76
	Harmony Style 14	46	Reflection Style 18 81
	Harmony Style 17	52	Country Style 09 84
	Elevated Style 10	56	Country Style 12 91
	Radius Style 15	60	Embrace Style 02 94
	Unfold Style 05	66	
100	ADDITIONAL INFORMATION	<hr/>	
	General Specification	100	
	How to Order	103	
105	ABOUT TOTO KITCHEN	<hr/>	
	Quality Assurance	105	Global Network 112
	Project References	110	





Introduction

## Personalized Luxury

We believe that your kitchen should be an extension of your personality. TOTO Kitchen's unique design system ensures versatility and comfort to meet your lifestyle demands. After all, luxury is the freedom of choice.

TOTO Kitchen departs from the one-size-fits-all approach to ensure that not a single nook or corner is overlooked. Our comprehensive range of modules is designed to optimize space and serve a purpose. Each and every single building block is designed to complement the shape and size of your space while delivering precise functionality and reliable durability.

Our kitchen sets are designed using the finest materials and finishing, tailor-made to your preference so you may nurture and nourish your loved ones in the comfort of your own home.













## Why TOTO kitchen



TOTO Kitchen only uses high quality materials that guarantee safety and durability. In compliance with the European E1 certification standards, we only use wood materials that contain low formaldehyde level in our product.

Safety &  
Durability



Why TOTO kitchen

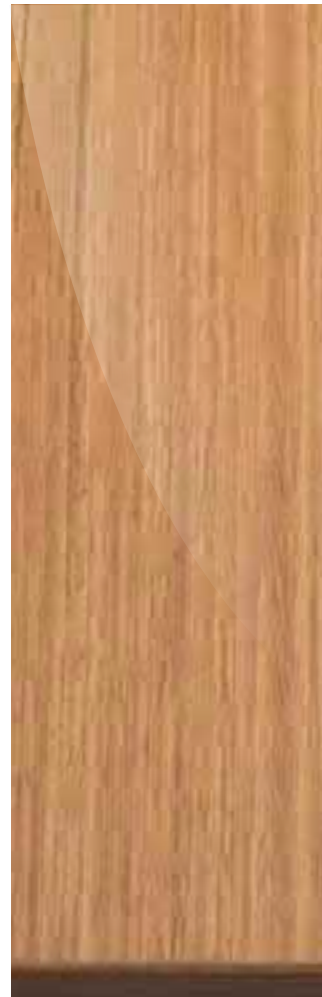
Our extensive selection of available finishes allows you to explore ideas and turn your dream kitchen into reality.



Luxurious  
Finish



VENEER HIGH GLOSS



VENEER OPEN PORE



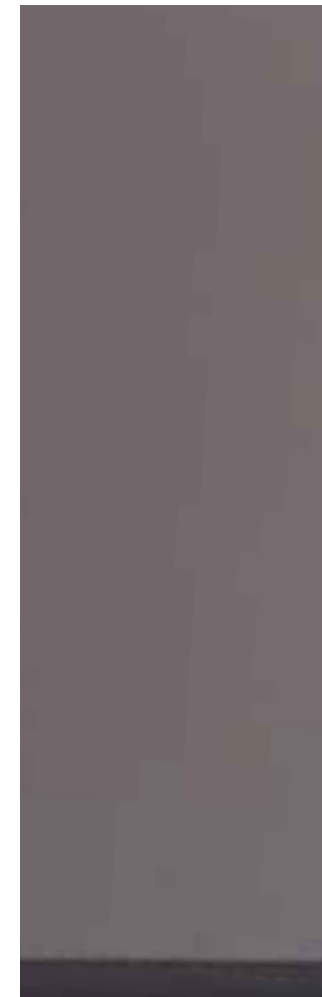
SUPER CLEAR GLASS



LACQUER HIGH GLOSS



LACQUER MATT



In order to produce high quality Veneer High Gloss finish, we apply multiple coats of polyurethane lacquer imported from Italy and Europe on the top of the veneer surface, which adds durability while still maintaining the integrity of the material.

Our Veneer Open Pore finish applies layers of transparent matt lacquer that protects and smoothens the surface area while preserving the texture of the wood for a more natural look.

Our Back Coated Super Clear Tempered Glass delivers unrivaled transparency to enhance the color of the lacquer used.

Layered with premium Italian polyurethane paint, our Lacquer High Gloss finish delivers long lasting color and higher hardness surface grade.

For those who prefer a more understated aesthetic, our Lacquer Matt finish is the perfect option. It goes through a five-layer coating process to achieve its polished look.

Why TOTO kitchen

All of our cabinets come fully accessorized to deliver the utmost comfort and convenience. Discover TOTO Kitchen's delightful range of accessories that includes cutlery trays, pullout waste bins, easy racks and etc.



Space  
Optimization



I.



II.



III.

I. Pull Out Sink Cabinet

II. Easy Rack

III. Drawer Divider

IV. Pocket Door

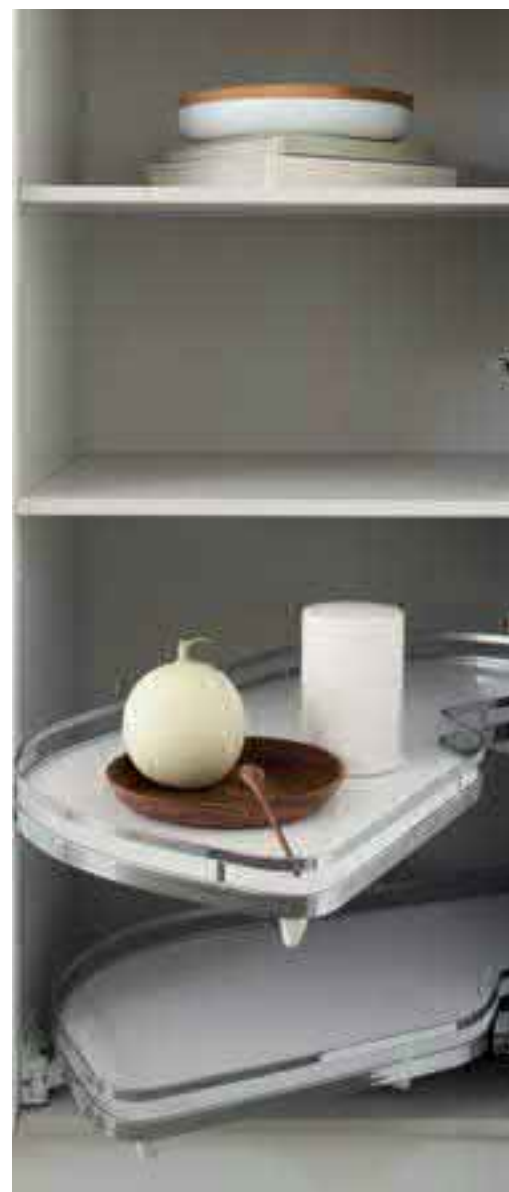


IV.





V.



VI.



VIII.



VII.

V. Drawer System    VI. LeMans Basket    VII. Drawer  
VIII. Evoline    IX. Bi-fold Door with Servo Drive System



IX.

Why TOTO kitchen



TOTO Kitchen believes that perfection is the sum of precision. We proudly distinguish ourselves by our careful and thorough inspection of the smallest details. Each of our drawers has been carefully considered to accommodate various tools and appliances. The same goes with our grid system compartments. All of our base, tall and wall units are designed to complement the user's height and depth.

Attention to  
Detail





## Kitchen Series

Whether you have a classic or minimalist lean, our extensive list of available materials and finishes will ensure that your kitchen reflect your unique personality.



Versatile  
Design

# Basic Style 07

MFC horizontal continuous wood grain

external handle





The ultimate manifestation of an unadulterated beauty, the MFC Kitchen Series features a beautiful wood grain texture that runs from one end to the other end.







# Basic Style 09



external handle

lift-up doors



# Harmony Style 14

honeycomb structure table

recessed handle







Lightweight yet sturdy, the embedded Honeycomb table offers a sleek and clean look while the kitchen's recessed handles add a touch of subtle luxury.





# Harmony Style 17

profile 50 handle tip-on doors





Characterized by its rich Indigo Blue Matt Lacquer finish, this series is designed to optimize mobility between the kitchen and serving area. It also allows for better cooking zone privacy and comfort.





# Elevated Style 10

hanging base and tall unit

premium veneer open pore





Layered with the ultra luxurious Cream Lacquer High Gloss, this kitchen features a tall unit hanging system for easy cleaning and designed to make your kitchen blend seamlessly with your furniture.





# Radius Style 15

bi-fold doors

thin plated handle







Characterized by its elegant curved panels, the Radius Collection features a cylindrical hood and thin plated handles exclusive to TOTO Kitchen. Its Bi-Fold doors open automatically for added convenience.





# Unfold Style 05

pocket doors

lacquer high gloss









The ultimate space saving solution, our pocket door system provides an efficient storage system without sacrificing style. Its piano finish delivers the perfect glossy effect while its thin countertop eliminates unnecessary bulk.



ebony high gloss veneer

open cabinets

## Unfold Style 08





# Reflection Style 06

recessed handle    midway accessories







Available in Black Lacquer and Silk Grey, this series is characterized by its super clear glass unit for a more elegant display system. It comes with vertical recessed handles, a fully integrated wine chiller and midway accessories.

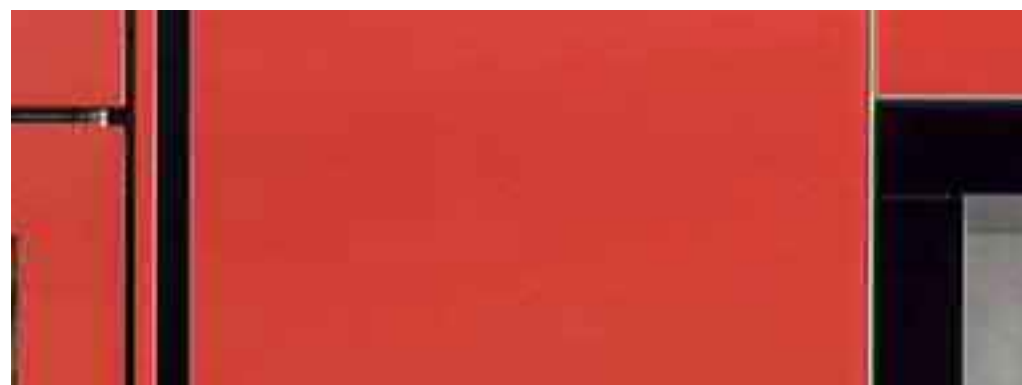




Reflection Style 18

super clear glass

recessed handle



# Country Style 09

external handle

lacquer matt







Our Country Style Kitchen delivers a rustic feel with modern sensibilities. Its Matt Lacquer finish conveys a sense of refinement for the bold and romantic at heart.







lacquer matt

external handle

## Country Style 12





# Embrace Style 02

easy rack

modern classic doors







The Embrace series is the perfect amalgamation of form and function. Its modern classic design comes fully equipped with an easy rack system.







# General Specification

## CARCASS

BOARD : MFC 16 MM  
ORIGIN : EUROPE  
QUALITY : CLASS E1  
EDGING : 0.6 MM ABS edging with matching color  
COLOR : Light Grey, Dark Grey

E1 is an European certification which indicates that the wood material used in the production process has a very low formaldehyde level. Hence, you can be assured of its safety towards your health.

## BACK PANEL

BOARD : MFC 8 MM  
COLOR : CARCASS FINISH  
ORIGIN : EUROPE  
QUALITY : CLASS E1

## DRAWER BOX & RUNNERS

**BLUM TANDEMBOX** with:

- ORION GREY MATT COATED "LEGRABOX"
- SILK WHITE "ANTARO"

## HINGE

- **BLUM** Integrated Soft Closing Hinges "SILENT AND EFFORTLESS"

## COUNTERTOP OPTION

- NATURAL STONE
- QUARTZ STONE
- SOLID SURFACE
- PORCELAIN

## ACCESSORIES

- EUROPEAN ORIGIN

## DOOR PANEL OPTION

### MFC

BOARD : MFC 18 MM  
ORIGIN : EUROPE  
QUALITY : CLASS E1  
EDGING : 1 MM ABS edging with matching color

### MFC LASER EDGING

BOARD : MFC 18 MM  
ORIGIN : EUROPE  
QUALITY : CLASS E1  
EDGING : 1 MM LASER edging with matching color

Smooth transition between the surface to edge allowing the creation of a seamless covering panel

### LACQUER HIGH GLOSS

BOARD : MDF 19 MM  
ORIGIN : EUROPE  
QUALITY : CLASS E1

Polyurethane lacquer high gloss finishing is acquired by conducting seven stages of lacquering process on all sides of a wood panel. It ensures excellent glossiness of the surface and leaves seamless joint lines between edges and surfaces.

### LACQUER MATT

BOARD : MDF 19 MM  
ORIGIN : EUROPE  
QUALITY : CLASS E1

Five layers of polyurethane lacquer coating is applied on a wood panel in order to produce matt finishing.

## VENEER HIGH GLOSS

BOARD : MDF 21 MM  
ORIGIN : EUROPE  
QUALITY : CLASS E1

In order to produce high quality veneer high gloss finishing, multiple coats of polyurethane lacquer are applied on top of the wood veneer surface.

## VENEER OPEN PORE

BOARD : MDF 21 MM  
ORIGIN : EUROPE  
QUALITY : CLASS E1

Veneer open pore finishing reveals its wood texture so that it will look more natural. Meanwhile, application of transparent matt lacquer as the final coat smooths out the texture of the surface.

## GLASS DOOR

5 MM Back Coated Super Clear Tempered Glass with Aluminum Frame.

Additional information

## How to Order

Your journey begins with a visit to the TOTO Kitchen showroom where you will meet with our design consultants. A thorough survey will be conducted to review your preferences and note any concerns that you may have. A design brief will then be submitted for your approval and voila, your dream kitchen is yours to have.

- 1 Preliminary Consultation with TOTO Kitchen Designers
- 2 Design Brief
- 3 Site Visit ( Optional )
- 4 Drawing / Proposal
- 5 Production
- 6 Delivery & Installation







About TOTO kitchen

## Quality Assurance

TOTO Kitchen is committed to building the best kitchen system. Our product quality standard abides by the same strict standard as TOTO Japan.

From material purchasing until the packing and loading of finished goods, our operation follows a strict quality control system.

TOTO Kitchen values your trust and loyalty, which is why we also offer 5 years guarantee against manufacturer defects.



As a subsidiary of the world-renowned sanitary ware company TOTO, TOTO Kitchen aims to provide creative lifestyle solutions for discerning urban customers. With the growing awareness of the importance of maintaining a healthy lifestyle, the kitchen is no longer relegated to the back of the house. It now stands front and center as more and more people develop an interest in food and culinary trends.

Located in Pasar Kemis, Tangerang, Indonesia, our factory has been producing and exporting quality kitchen worldwide. Over the years, our state-of-the-art machinery and progressive Standard Operating Procedure have placed us at the forefront of design and innovation.

Our factory Quality Control procedure abides by the strictest Japanese standards. All wooden carcasses go through a pressing stage to ensure that each of them are well measured and stand at a consistent 90 degree angle on each side. We also keep a detailed record and consistent supply of lacquer colors so you may rest easy should there be a need for replacement or repair in the future. The hinges used in our products are also designed to perform silently and effortlessly because we understand that elegance and ease are the very definition of luxury.





# Project References



ANANDAMAYA RESIDENCES



THE ELEMENTS APARTMENT



SENOPATI SUITES 2 & 3



MULIA RESORT



SAUMATA APARTMENT



METROPARK



NADI BANGSAR



THE BOUTIQ

## DOMESTIC—PROJECT

- ATRIUM MULIA
- REGENT RESIDENCES
- BRANZ SIMATUPANG
- ANANDAMAYA RESIDENCES
- MARIGOLD APARTMENT
- THE ELEMENTS APARTMENT
- KENSINGTON RESIDENCES
- ONE EAST RESIDENCE
- VIMALA HILLS
- LANCEWOOD NAVA PARK
- SAUMATA APARTMENT
- DE VASA HOTEL
- 1 PARK AVENUE APARTMENT
- L'AVENUE
- SATU 8 RESIDENCE
- SENOPATI SUITES 2 & 3
- THE ST. MORITZ
- WISMA MULIA II
- FOUR WINDS OF SENAYAN
- WINDSOR APARTMENT
- LA MAISON BARITO
- ASCOTT WATERPLACE TOWER D-1 — SERVICED APARTMENT
- VERDE CONDOMINIUM
- MULIA RESORT
- SENAYAN RESIDENCE
- REGATTA APARTMENT
- KEMANG VILLAGE APARTMENT
- THE PEAK APARTMENT
- KEMANG MANSION
- SETIABUDI RESIDENCE
- GRAND INDONESIA APARTMENT

## INTERNATIONAL—PROJECT

- HILBRE 28 HILLSIDE — *Singapore*
- METROLOFT — *Singapore*
- THE BOUTIQ — *Singapore*
- PAVILION SQUARE — *Singapore*
- 91 MARSHALL — *Singapore*
- AURA 83 — *Singapore*
- MACAU UNIVERSITY — *Macau*
- MA ON KONG — *Hongkong*
- BELLEVUE SERVICED APARTMENT — *Cambodia*
- NADI BANGSAR — *Malaysia*
- METROPARK — *Shanghai*
- RESIDENCE INN ANAHEIM — *California, U.S.*
- HOMWOOD SUITES MISSION VALLEY HILTON — *California, U.S.*
- AVALON 15 — *California, U.S.*
- AVALON 11 — *California, U.S.*
- HOMWOOD SUITES HARBOR VIEW HOTEL — *California, U.S.*
- GARNET COTTAGE DEVELOPMENT — *Papua New Guinea*
- MONIAN — *Papua New Guinea*
- LE HUNTE — *Papua New Guinea*

## Global Network

### JAKARTA

PT SURYA TOTO INDONESIA TBK.  
Head Office : Jl. Tomang Raya No. 18,  
Jakarta 11430, Indonesia  
Tel : +62-21-29298686 Fax: +62-21-5682282, 5601296

GANDARIA CITY  
1st Fl. Unit 193-196, Jl. K. H. Syafi'i Hazami No. 8,  
Jakarta 12240, Indonesia  
Tel : +62-21-29053258

GRAND INDONESIA  
East Mall 3rd Fl. No. 30, Jl. M. H. Thamrin No. 1,  
Jakarta 10310, Indonesia  
Tel : +62-21-23581065

KEMANG VILLAGE  
2nd Fl. No. 9, Jl. P. Antasari No. 36,  
Jakarta 12150, Indonesia  
Tel : +62-21-29528417

PACIFIC PLACE  
2nd Fl. No. 22-23, Jl. Jendral Sudirman Kav. 52-53,  
Jakarta 12190, Indonesia  
Tel : +62-21-57973072

### SURABAYA

PT SURYA PERTIWI  
Jl. Gubernur Suryo No. 1 G-H, Indonesia  
Tel : +62-31-5353232, 5479006 Fax: +62-31-5465007

### BALI

PT MITRA ADIKA LESTARI  
Jl. Teuku Umar No. 165, Indonesia  
Tel : +62-361-261821 Fax: +62-361-229180

### SINGAPORE

W. ATELIER PTE LTD.  
75 Bukit Timah Road #01-02, Singapore 229833  
Tel : +65-62708828  
Fax: +65-62700020 (Retail), +65-62709929 (Project)

### KUALA LUMPUR

W. ATELIER SDN BHD.  
Lot 9B-3A, Jalan Kemajuan, Section 13, 46200 Petaling Jaya,  
Selangor Darul Ehsan, Malaysia  
Tel : +603-79602888 Fax: +603-79609098

### HONG KONG

VAN SHUNG CHONG HOLDINGS LIMITED (A VSC Company)  
1/F, East Town Building, 41 Lockhart Road,  
Wanchai, Hong Kong  
Tel : +852-22382628 Fax: +852-21692983

### MACAU

WIN 2 PACIFIC LIMITED  
No. 1 Rua Do Volong  
Macau  
Tel : +853-28354233 Fax: +853-28572000

### PAPUA NEW GUINEA

HOT TROPIC LTD.  
Section 54 Lot 3  
Ago St, Gordons, NCD  
Port Moresby, Papua New Guinea  
Tel : +675-76378295

Info-Kitchen@toto.co.id

TOTO KITCHEN 2017

MANUFACTURER  
TOTO

WHILE ANY REASONABLE CARE HAS BEEN TAKEN WHILE PREPARING  
THIS CATALOG, WE CANNOT BE HELD RESPONSIBLE FOR ANY  
INACCURACIES.

COPYRIGHT©2017 TOTO ALL RIGHTS RESERVED

[www.parsital.com](http://www.parsital.com)



KITCHEN

2017

**TOTO**

June 2017 - 157

[WWW.TOTO.CO.ID](http://WWW.TOTO.CO.ID)