

Raspberry pink
RB 60299 OP



Juicy orange
RB 60299 OO



Burgundy
RB 60299 OR



Lime green
RB 60299 OG



White
RB 60299 OW



Black
RB 60299 OBK



Fiery red
RB 60299 ORD



Cream
RB 60299 OC



Royal coffee
RB 60299 OCO



Silver
RB 60299 OX



Baby blue
RB 60299 OBL



.....
RB 60299
.....

Gorenje Retro Edition
.....

Freestanding Refrigerator
.....

SuperCool

FreezeBox

DynamicCooling
.....

288 l Gross Volume

1,52 m

A++
.....







Life is colours. Colours are life.

Colours are one of the most powerful means of expression. When designing our homes, colours are true storytellers. They infuse energy, they communicate values, they explain emotions. The times when one could choose from appliances in just black or white are by now just a grey memory. Gorenje colour selection offers a wide range of colourful options for cooling, washing and drying. All appliances are quality made, offer an inspiring user experience and are made to save time, energy and water. And on top of that, they are dressed in life's most beautiful colours.

COOLING

The refrigerator is the centre of any kitchen. When this loyal friend comes in colours it also becomes an enjoyable visual focal point. That is why Gorenje refrigerators offer such a wide range of colours to choose from, all packed into inspiring pieces of design. While playful on the outside, on the inside they feature a powerful mix of technologies that guarantee optimal conditions for keeping food fresh and healthy.





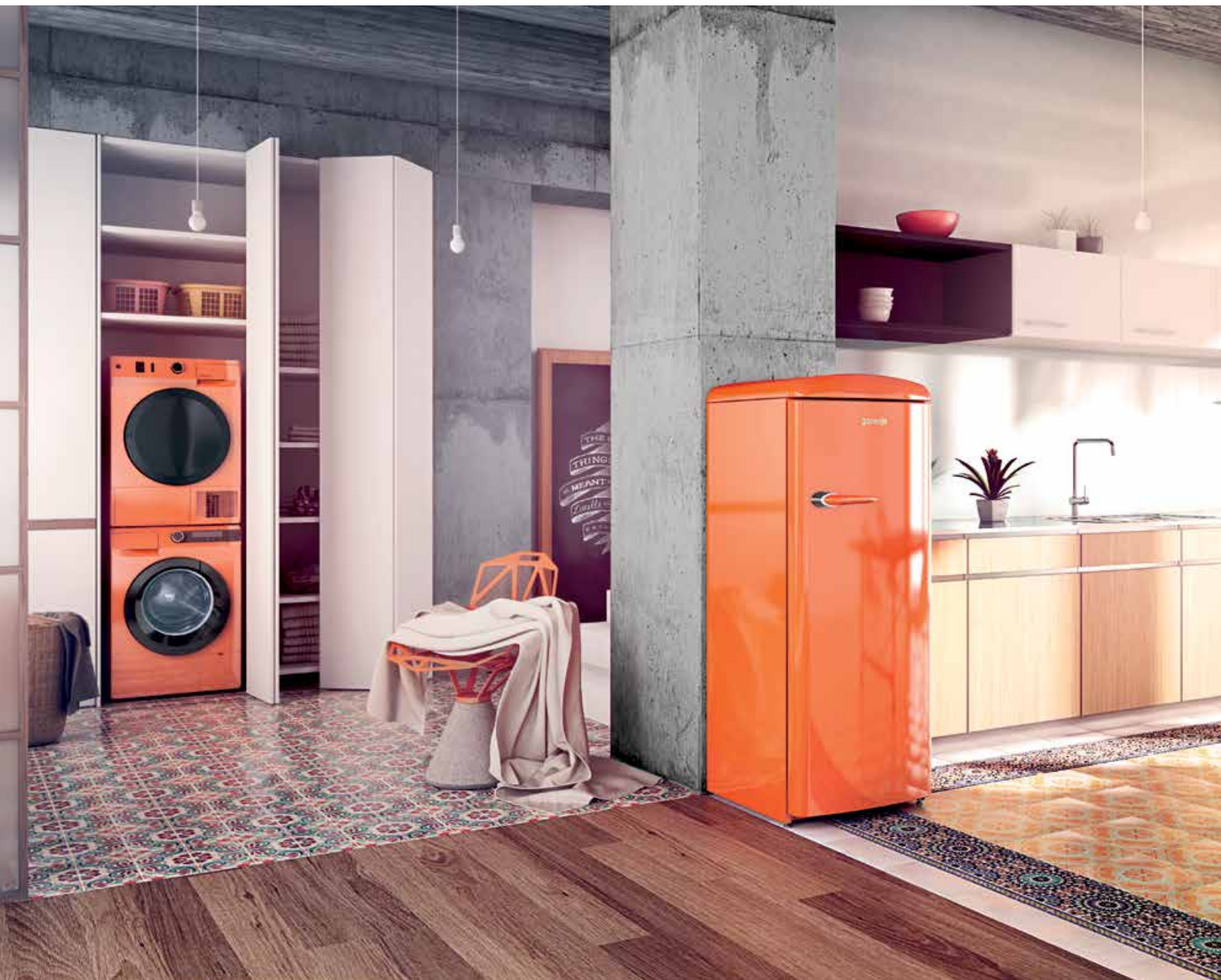


RETRO EDITION

COLD BECOMES CHARMINGLY COOL

Underneath the timeless shape there is an inspiringly practical cooling appliance. A combination of vintage design and a long list of passionate colours to choose from make this refrigerator a welcome emphasis in your kitchen interior. As a design item it can also be easily placed in the living room, which comes in especially handy in smaller urban nests, but also in modern open-space living environments. Each Retro refrigerator boasts optimal space usage, an elegant character and all the helpful features one would expect from a true charmer. Whether it is funky orange, nostalgic brown, seductive red or any other colourful personality, these modern icons are an instant hit wherever they pop up.





UNITED SHADES OF COOL

SELECTION OF GORENJE
COLOUR EDITION

2015

gorenje
Life Simplified



Cream
RK 60359 OC

Black
RK 60359 OBK

Royal coffee
RK 60359 OCO

Burgundy
RK 60359 OR

Silver
RK 60359 OX

White
RK 60359 OW



Cream
RF 60309 OC

Black
RF 60309 OBK

Royal coffee
RF 60309 OCO

Burgundy
RF 60309 OR

Silver
RF 60309 OX

White
RF 60309 OW



RK 60359

Gorenje Retro Edition

Freestanding Refrigerator with bottom freezer

SuperCool
Large crisper drawer
DynamicCooling

342 l Gross Volume

1,88 m

A++

RF 60309

Gorenje Retro Edition

Freestanding Refrigerator with top freezer

SuperCool
DynamicCooling
FastFreeze

296 l Gross Volume

1,73 m

A++





ION GENERATION

DREAM TEAM

This family of refrigerators was designed to be a perfect match for the modern, active lifestyle. Besides being extremely energy efficient, they namely introduce a long list of innovative solutions that create the optimal microclimate, making fresh, tasty and healthy food available anytime. The Ion Air feature slows down food degeneration processes, while MultiFlow 360° distributes the air ideally throughout the whole of the interior. The spacious inside is adaptable to many packages of food, while the ergonomically designed outside proudly shines in a variety of possible colours.

Silver
NRK 6192 JX



Fiery red
NRK 6192 JRD



Champagne
NRK 6192 JC



Bordeaux
NRK 6192 JR



Black
NRK 6192 JBK



Silver
RK 6193 KX



Fiery red
RK 6193 KRD



Champagne
RK 6193 KC



Bordeaux
RK 6193 KR



Black
RK 6193 KBK



Juicy Orange
RK 6192 EO



NRK 6192

Ion Generation ADVANCED

NoFrost Plus Fridge Freezer

IonAir with DynamicCooling
AdaptTech
CrispZone with
HumidityControl

329 | Gross Volume

1,85 m

A++

RK 6192

Ion Generation ESSENTIAL

FrostLess Fridge Freezer

FreshZone drawer
CrispZone with
HumidityControl

326 | Gross Volume

1,85 m

A++

RK 6193

Ion Generation ADVANCED

FrostLess Fridge Freezer

IonAir with DynamicCooling
AdaptTech
CrispZone with
HumidityControl

326 | Gross Volume

1,85 m

A+++



For other colours see page 22

WASHING & DRYING

Doing laundry is one of those things that tends to get messy and always takes more time than sensible. Gorenje washing and drying machines act like understanding personal assistants that can take all of that away and efficiently handle all laundry-related business. They also keep the environment in mind and operate extremely efficiently. Handling the complicated daily routines of modern families is their speciality since the smart technology enables them to work while you are sleeping or just living your life.

And yes, Gorenje washing and drying machines speak in colours – bright, beautiful colours.





Juicy Orange
W 8543 LO



SENSOCARE WASHERS

TECHNOLOGY WITH A HEART

All fabric demands special treatment and a unique combination of the water level, washing detergent, drum rotation and time. SencoCare technology takes on this challenge with gusto. This generation of washing machines provides excellent laundry care even when washing at only 30°. Whether they are white, black or in colour, these skilful washing specialists take care of it all. They simplify laundry-related tasks and take away all the stress through a list of pre-set programmes and variety of helpful features. Sencocare washing means that even an ultra-sensitive, ultra-expensive dress will become just another routine operation.

.....
W 8543
.....

Sencocare Washing Machine
.....

Colour Edition
.....

SensoCare
GreenCare
SpaDrum
.....

1400 rpm
8kg
A+++
.....



Black
W 8543 LB



Silver
W 8543 LA



Fiery Red
W 8543 LR



Juicy Orange
D 8565 NO

SENSOCARE TUMBLE DRYERS

SMOOTH OPERATOR

On the outside, Gorenje dryers are all emotional: they are superbly designed and come in many lively colours. But, on the inside, Gorenje dryers are all rational. They are extremely energy efficient, they actively prevent creases and notably soften fabrics. GentleCare will treat even the most sensitive fabrics respectfully by drying them at no more than 40 °C. Sensocare dryers also make ironing and folding easier or even unnecessary as they sense and automatically adjust the moisture still left in clothes. And all of this happens in almost silence.

D 8565

SensoCare Tumble Dryer

Colour Edition

IonTech

TwinAir

Drum Illumination

Sensor IQ

8kg

A++

Black
D 8565 NBSilver
D 8565 NAFiery Red
D 8565 NR



Juicy orange
RB 60299 OO



Lime green
RB 60299 OGR



Raspberry Pink
RB 60299 OP



Cream
RB 60299 OC
RB 60299 OC-L



Burgundy
RB 60299 OR RB
60299 OR-L



Baby Blue
RB 60299 OBL
RB 60299 OBL-L



Silver
RB 60299 OX



Black
RB 60299 OBK
RB 60299 OBK-L



White
RB 60299 OW
RB 60299 OW-L



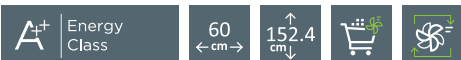
Fiery red
RB 60299 ORD
RB 60299 ORD-L



Royal coffee
RB 60299 OCO

RB 60299

Freestanding fridge



Colour

Juicy Orange // Lime Green // Raspberry Pink // Cream // Burgundy // Baby Blue // Silver // Black // White // Fiery red

Door opening: Right door opening - Left door opening // Climate class: **SN, ST, N, T**

Efficiency

1 compressor // Total gross/net volume: **288 / 281 l** // Capacity of cooling compartment: gross/net: **262 / 255 l** // Capacity of freezer compartment: gross/net: **26 / 26 l** // Freezing capacity in 24 hours: **2 kg / 24h** // Power cut safe time: **18 h**

Control

Mechanic control

Features

Fan-assisted cooling in fridge // SuperCool

Equipment of refrigerator

Decorative cover // Type of interior light: LED // 4 glass shelves // Bottle holder // Dairy shelf // Bottle shelf with fixed trap // Flexible egg tray (12x) // Deep door two-partition bottle shelf // large crisper drawer for vegetables and fruit

Equipment of freezer

1 compartment with door for frozen food // 1 ice tray

Technical data

Energy consumption kWh/24h: **0,536 kWh** // Energy consumption kWh/year: **196 kWh** // Level of noise (max.): **42 dB(A)re 1 pW**
Product dimensions (HxWxD): **152,4 × 60 × 64 cm**



Cream
RF 60309 OC
RF 60309 OC-L



Burgundy
RF 60309 OR
RF 60309 OR-L



Silver
RF 60309 OX



Black
RF 60309 OBK
RF 60309 OBK-L



White
RF 60309 OW
RF 60309 OW-L

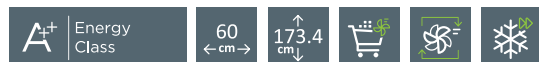


Royal coffee
RF 60309 OCO

RF 60309

Freestanding fridge freezer

5
YEAR
WARRANTY



* ** ** *

Colour

Cream // Burgundy // Silver // Black // White // Royal coffee

Door opening: Right door opening - Left door opening // Climate class: **SN, ST, N, T**

Efficiency

1 compressor // Total gross/net volume: **296 / 294 l** // Capacity of cooling compartment: gross/net: **231 / 229 l** // Capacity of freezer compartment: gross/net: **65 / 65 l** // Freezing capacity in 24 hours: **4,5 kg / 24h** // Power cut safe time: **22 h**

Control

Mechanic control

Features

Fan-assisted cooling in fridge // SuperCool // FastFreeze

Equipment of refrigerator

Decorative cover // Type of interior light: LED // 4 glass shelves // Bottle holder // Dairy shelf // Bottle shelf with fixed trap // Flexible egg tray (12x) // Deep door two-partition bottle shelf // large crisper drawer for vegetables and fruit

Equipment of freezer

1 wire shelf in freezer department // 1 compartment with door for frozen food // 1 ice tray

Technical data

Energy consumption kWh/24h: **0,583 kWh** // Energy consumption kWh/year: **213 kWh** // Level of noise (max.): **39 dB(A)re 1 pW**

Product dimensions (HxWxD): **173,4 x 60 x 64 cm**



Burgundy
RK 60359 OR
RK 60359 OR-L



White
RK 60359 OW
RK 60359 OW-L



Cream
RK 60359 OC
RK 60359 OC-L



Royal Coffee
RK 60359 OCO



Silver
RK 60359 OX



Black
RK 60359 OBK
RK 60359 OBK-L

RK 60359

Freestanding fridge freezer



Colour

Burgundy // White // Cream // Royal Coffee // Silver // Black

Door opening: Right door opening - Left door opening // Climate class: **SN, ST, N, T**

Efficiency

1 compressor // Total gross/net volume: **342 / 321 l** // Capacity of cooling compartment: gross/net: **231 / 229 l** // Capacity of freezer compartment: gross/net: **111 / 92 l** // Freezing capacity in 24 hours: **4 kg / 24h** // Power cut safe time: **21 h**

Control

Mechanic control

Features

Fan-assisted cooling in fridge // SuperCool

Equipment of refrigerator

Decorative cover // Type of interior light: LED // 4 glass shelves // Bottle holder // Dairy shelf // Bottle shelf with fixed trap // Flexible egg tray (12x) // Deep door two-partition bottle shelf // Large crisper drawer for vegetables and fruit

Equipment of freezer

2 storage drawers // 1 drawer for freezing // 1 ice tray

Technical data

Energy consumption kWh/24h: **0,628 kWh** // Energy consumption kWh/year: **229 kWh** // Level of noise (max.): **41 dB(A)re 1 pW**
Product dimensions (HxWxD): **188,7 x 60 x 64 cm**



Silver
NRK 6192 JX



Champagne
NRK 6192 JC



Fiery red
NRK 6192 JRD



Bordeaux
NRK 6192 JR



Black
NRK 6192 JBK

NRK 6192 J

Freestanding fridge freezer

5
YEAR
WARRANTY



* ** ** *

Colour

Silver // Champagne // Fiery red // Bordeaux // Black

Door opening: Reversible door opening // Climate class: **SN, ST, N, T**

Efficiency

1 compressor // Total gross/net volume: **329 / 306 l** // Capacity of cooling compartment: gross/net: **231 / 221 l** // Capacity of freezer compartment: gross/net: **98 / 85 l** // Freezing capacity in 24 hours: **5 kg / 24h** // Power cut safe time: **18 h**

Control

Electronic control

Features

IonAir: Ionizer in the fridge // AdaptTech cooling: Memorizing intelligent system // Multiflow 360°: Multi 3D air blowing // Slot-in: possibility to put the appliance into the kitchen niche 60 cm // NoFrost Plus // FastFreeze

Equipment of refrigerator

Egg/Ice bin: Egg/Ice bin: 1 x 7 // SimpleSlide height adjustable door shelves: 2 // Type of interior light: LED // 4 glass shelves // Bottle holder // Bottle shelf with fixed trap // MultiBox for butter and cheese // FreshZone drawer // CrispZone with HumidityControl: big vegetable drawer with humidity regulation

Equipment of freezer

3 drawers for freezing - 1 XXL SpaceBox drawer

Technical data

Energy consumption kWh/24h: **0,643 kWh** // Energy consumption kWh/year: **235 kWh** // Level of noise (max.): **42 dB(A)re 1 pW**
Product dimensions (HxWxD): **185 x 60 x 64 cm**



Black
RK 6192 EBK



Champagne
RK 6192 EC



Juicy Orange
RK 6192 EO



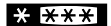
Fiery red
RK 6192 ERD



Bordeaux
RK 6192 ER

RK 6192 E

Freestanding fridge freezer



Colour

Black // Champagne // Juicy Orange // Fiery red // Bordeaux

Door opening: Reversible door opening // Climate class: **SN, ST, N, T**

Efficiency

1 compressor // Total gross/net volume: **326 / 324 l** // Capacity of cooling compartment: gross/net: **229 / 229 l** // Capacity of freezer compartment: gross/net: **97 / 95 l** // Freezing capacity in 24 hours: **4,5 kg / 24h** // Power cut safe time: **30 h**

Control

Mechanic control

Features

Slot-in: possibility to put the appliance into the kitchen niche 60 cm // FrostLess: Less ice building in the freezer

Equipment of refrigerator

Egg/Ice bin: 1 x 7 // SimpleSlide height adjustable door shelves: 2 // Type of interior light: LED // 4 glass shelves // Bottle holder // Bottle shelf with fixed trap // FreshZone drawer // CrispZone with HumidityControl: big vegetable drawer with humidity regulation

Equipment of freezer

3 drawers for freezing - 1 XXL SpaceBox drawer

Technical data

Energy consumption kWh/24h: **0,635 kWh** // Energy consumption kWh/year: **232 kWh** // Level of noise (max.): **40 dB(A)re 1 pW**
Product dimensions (HxWxD): **185 x 60 x 64 cm**



Fiery red
RK 6193 KRD



Champagne
RK 6193 KC



Bordeaux
RK 6193 KR



Silver
RK 6193 KX



Black
RK 6193 KBK

RK 6193 K

Freestanding fridge freezer

5
YEAR
WARRANTY



* ** ** *

Colour

Fiery red // Champagne // Bordeaux // Silver // Black

Door opening: Reversible door opening // Climate class: **SN, ST, N, T**

Efficiency

1 compressor // Total gross/net volume: **326 / 322 l** // Capacity of cooling compartment: gross/net: **229 / 227 l** // Capacity of freezer compartment: gross/net: **97 / 95 l** // Freezing capacity in 24 hours: **4,5 kg / 24h** // Power cut safe time: **30 h**

Control

Electronic control

Features

IonAir: Ionizer in the fridge // **AdaptTech** cooling: Memorizing intelligent system // Slot-in: possibility to put the appliance into the kitchen niche 60 cm // **FrostLess**: Less ice building in the freezer // **DynamiCooling** // **FastFreeze**

Equipment of refrigerator

Egg/Ice bin: Egg/Ice bin: 1 x 7 // SimpleSlide height adjustable door shelves: 2 // Type of interior light: LED // 4 glass shelves // Bottle holder // Bottle shelf with fixed trap // MultiBox for butter and cheese // FreshZone drawer // CrispZone with HumidityControl: big vegetable drawer with humidity regulation

Equipment of freezer

3 freezing drawers - 1 XXL SpaceBox drawer

Technical data

Energy consumption kWh/24h: **0,423 kWh** // Energy consumption kWh/year: **154 kWh** // Level of noise (max.): **40 dB(A)re 1 pW**
Product dimensions (HxWxD): **185 x 60 x 64 cm**



Silver
W 8543 LA



Juicy Orange
W 8543 LO



Fiery red
W 8543 LR



Black
W 8543 LB

W 8543

Washing machine



Colour

Silver // Juicy Orange // Fiery red // Black

Efficiency

Standard collector motor // SensoCARE // Special drum construction SpaDrum
Spin speed: **1400 rpm** // Washer load: **1-8 kg** // Drum volume: **64 l**

Control

LED display // Adjustable spin speed // Temperature setting // Cold wash: Button // Personal settings for all programmes

Programmes

23 programmes // Wool, Hand wash, Mix, Cotton, Quick programme, Synthetics // Prewash // Special programs: Allergycotton, Baby, Anti mites, Silent washing, Active, PerfectBlack // Ability to create own programmes: MyFavorite

Features

Audio signal SoftSound // Self cleaning program SterilTub // Pump STOP // Cold water connection

SensorIQ technology

Automatic recognition of laundry weight TotalWeight // ECOSystem

Safety and durability

Overflow protection // Child protection (CDP) // Stability Control (SCS) // FiberTech

Technical data

Energy consumption kWh/year: **192 kWh** // Annual water consumption: **10340 l** // Level of noise (max.): **73 dB(A)re 1 pW**
Product dimensions (HxWxD): **85 x 60 x 60 cm**



Silver
D 8565 NA



Juicy Orange
D 8565 NO



Fiery red
D 8565 NR



Black
D 8565 NB

D 8565

Freestanding condenser tumble dryer



Colour

Silver // Juicy Orange // Fiery red // Black

Efficiency

Dryer load: 1-8 kg // IonTech technology // TwinAir // Heat pump // Drum volume: 120 l // Drum illumination with LED light // Porthole diameter: 35 cm // Door opening angle: 180 ° // Reversible drum action // Direct discharge of condensate AutoDrain

Control

Personal settings for all programmes // LED display

Programmes

15 programmes // Programmes: Cotton / Synthetics / Delicates / Mix / Wool / XL programme

Functions

Anticrease

Features

Audio signal SoftSound // FiltrationSupreme // Drying phase indicator // Signal for "full water container" // Remaining time on display // Vacuum feet

SensorIQ technology

Humidity sensor // Service diagnostic indicator

Safety and durability

Protective thermostat // Automatic switch off when door is open // Child protection (CDP) // Stainless steel inner/outer drum

Technical data

Noise level: **65 dB(A)**re 1 pW // Energy consumption kWh/year: **218 kWh**

Product dimensions (HxWxD): **85 × 60 × 60 cm**

gorenje

GORENJE UK Ltd
Tuition House
27-37 St George's Road
London
SW19 4EU

T 020 8247 39 80
F 020 8247 39 99

E info.uk@gorenje.com
www.gorenje.co.uk

www.parsital.com