

How individual can a hot tub be?

You want a hot tub that is distinct from the standard usually to be found on the market? With a different design and technology? And that is both safe and energy-efficient? You'll be surprised by the range of models and options available.

The Design, Premium and Comfort Lines have many great properties in common: they offer innovative technology, outstanding design, top quality and high-comfort equipment levels - namely everything that customers have come to expect of the Villeroy & Boch brand.

Discover a new class of hot tub with a level of excellence available only from Villeroy & Boch.

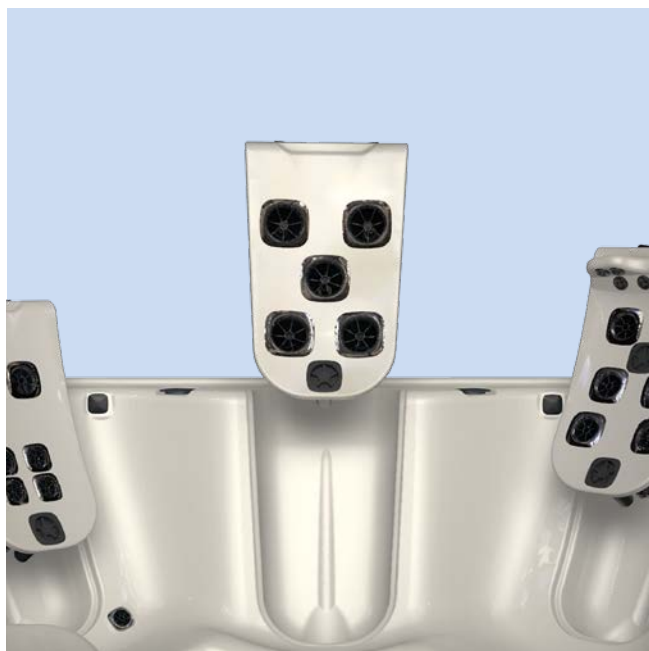
CONTENTS



Individual relaxation

*Individual relaxation
with the Villeroy & Boch hot tubs*

- 06 Relaxation for quality of life
- 08 The ideal way to get away from it all
- 10 Fitness and wellness belong together
- 12 Vitality and radiance
- 14 Wellness with hydrotherapy



A new class of hot tub

*How is the Villeroy & Boch hot tub
different from standard market products?*

- 16 Innovative through and through
- 18 Wood-free support structure
- 19 High energy efficiency
- 20 Unique JetPak technology
- 21 Shorter pipes - more power
- 22 Tailored individuality
- 24 Sport Flow Therapy
- 26 Wellness Flow Therapy
- 28 Relax Flow Therapy



Outstanding design

*Plenty of scope
for individuality*

- 30 Modern living concepts in an architectural style
- 32 Award-winning design
- 36 Black & White, a true classic



red dot award 2016
winner



Product variety

*Design Line, Premium Line, Comfort Line
Similarities and differences*

- 38 Three product lines for more design scope
- 40 Design Line - Just Silence
- 44 Premium Line - Luxury complete with all the fittings
- 48 Comfort Line - Designed for comfort
- 51 Stylish accessories
- 52 Choice of colours
- 54 All the models and their features
- 56 Water quality
- 58 Hot tub audio systems

Relaxation for quality of life

It's generally the small pleasures in life that have the most miraculous effects. Wellness is one of them. Wellness means being active, taking control of your life and keeping it in balance.

Relaxation in warm water really makes you both look and feel good. And there are plenty of reasons for this:

- The warm water in the tub gets the musculoskeletal system into shape.
- The pleasant massage effect invigorates the muscles.
- The parasympathetic nervous system is activated and reverses stress-related responses in our body.

Using a hot tub on a regular basis improves quality of life. When body and spirit are in harmony, well-being comes of its own accord.



The ideal way to get away from it all

When the demands of your everyday working and private life get in the way of health and relaxation, there is little time to find a healthy balance. Make your own hot tub a calm and invigorating place that you and your family can visit whenever you like. Your outdoor hot tub offers complete relaxation throughout the year: fresh air in both summer and winter.

Did you know?

- The calming effect of warm water helps you to fall asleep at night
- The whirling effect calms the autonomic nervous system when the stress of modern life gets the upper hand



Fitness and wellness belong together

Every sportsperson knows that the regeneration phase after sporting activity is as important as warming up beforehand. And there's no more relaxing way of doing this than in a hot tub. Improving physical fitness and performance depends not only on systematic training but also on the appropriate regeneration between training units. For many professional sportspeople, bathing in a hot tub is compulsory after physical exercise.

After exercise, water helps to:

- Prevent aching muscles
- Relax tendons and ligaments





Vitality and radiance

Beauty can be achieved naturally. Every time you bathe in a hot tub it improves the natural radiance of your skin and body. In addition, the calming warmth naturally ensures that you get the beauty sleep you need.

Did you know that a hot tub

- Helps you to relax quickly?
- Stimulates various body functions and, after just a short time, the body enters a state of deep relaxation?
- With the movement of the water, stimulates the nerve endings in the skin and this is balm for the soul?
- Helps to promote the work-life balance?
- Stimulates the metabolism, thereby boosting the circulation to the skin?



Wellness with hydrotherapy

Treat yourself: immerse your whole body in the warm water and feel the benefits of millions of tiny bubbles. Enjoy the beneficial effect on your health and general well-being. These effects are varied and of long duration. This is partly thanks to the JetPak massage jets, which are available with varying whirl intensities and types in order to target different zones and to achieve different therapeutic effects.

Do you know about the positive effects of hydrotherapy?

- Your body is massaged and invigorated.
- Hydrostatic pressure on the muscles removes waste products.
- The blood circulation is stimulated and this has a positive effect on the cardio-vascular system.
- The warmth eases the tension in joints and muscles for greater relaxation.
- Hydrotherapy also alleviates pain in the musculoskeletal system and prevents backache.
- It is most effective when the massage is adjusted to individual needs.







Innovative through and through

Engineering, technology, design and workmanship - this is what really makes a high-quality product. Villeroy & Boch has developed a variety of sophisticated features for its “new class of hot tub”. Innovative through and through!

The EnduraFrame™ support structure

This wood-free design ensures above-average load-bearing capacity and durability.

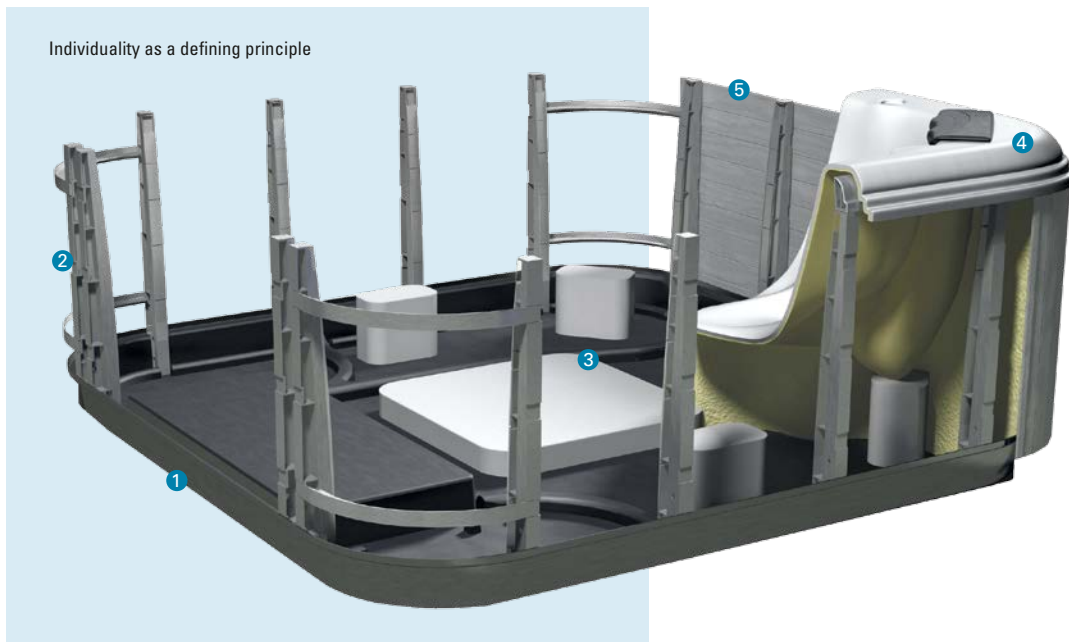
Individual massage thanks to JetPak technology

You can choose from up to 18 different JetPaks and click them into place at every seat in no time at all - for a wellness experience that is exactly tailored to the respective needs.

Top performance and efficiency

The most economical hot tubs in the world are designed for the efficient use of resources. Thanks to the full-foam insulation, economical ducting and energy-saving cover.

Maintenance-free structure

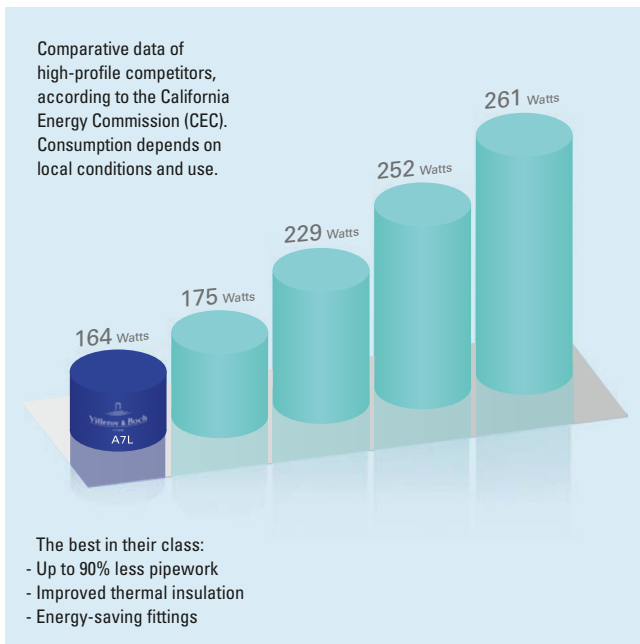


Villeroy & Boch hot tubs consist of a durable, robust, fully enclosed and wood-free support structure which prevents moisture and vermin from getting in: Endura Frame™.

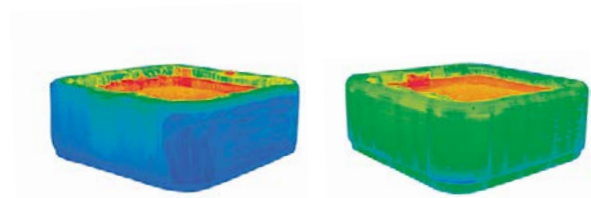
In combination with this structure, the robust plastic supports and high-quality UV-resistant panelling ensure above-average strength and a long service life.

- ① EnduraBase™ - The closed ABS floor delivers noticeably quieter operation and a reduction in vibrations
- ② EnduraBeam™ - The integral frame construction ensures above-average strength and durability
- ③ EnduraSupports™ - For increased stability in the footwell and sitting areas
- ④ EnduraShell™ - The acrylic surface is reinforced with polyurethane foam for enhanced hygiene and a lasting shine
- ⑤ EnduraWood™ - Weather and UV-resistant plastic outer construction

High-energy efficiency



The economical Villero & Boch hot tubs



Villero & Boch hot tub:
The water stays warm.

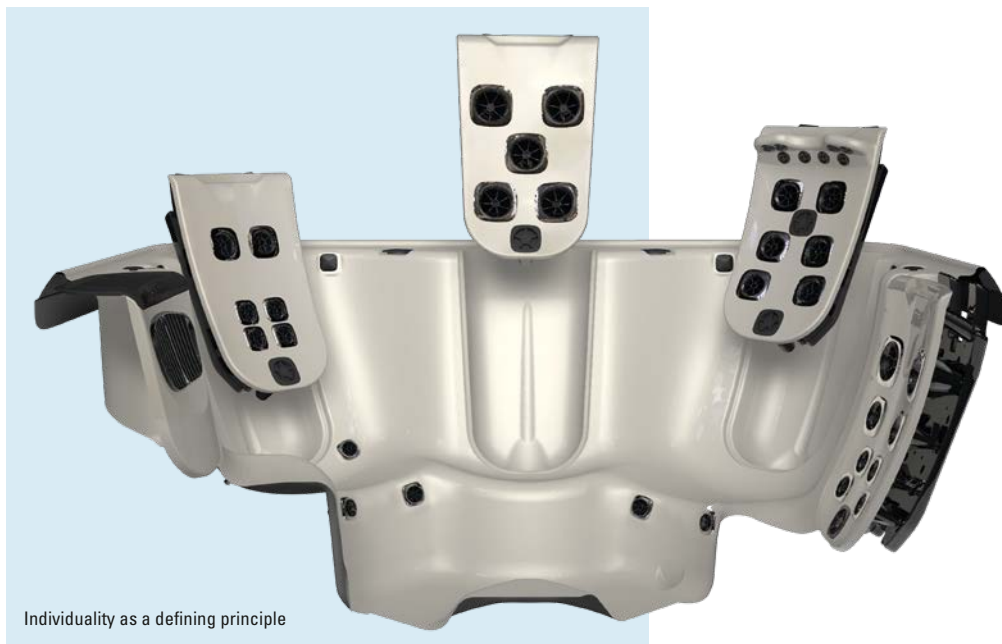
Standard hot tub without
full-foam insulation.

Villero & Boch hot tubs are probably the most economical in the world. The full-foam insulation ensures that no energy is lost: the innovative JetPak technology uses the heat from the hot tub as up to 90% of the pipes run through the warm pool water so the warmth of the water in the pipes is transferred to the water in the hot tub. Villero & Boch hot tubs are even more efficient because, unlike standard hot tubs that use cold external air, they use the warm air from behind the JetPaks and the warm pump area.

Efficiency thanks to:

- Up to 90% less pipework
- Optimised pipework thanks to the use of the warm tub water
- Use of warm air behind the JetPaks
- Full-foam insulation
- Energy-saving cover

Unique JetPak technology



For each hot tub in the Design, Premium and Comfort Line, you can combine your preferred combination of jets with your favourite seat.

Choose between a variety of JetPaks and quickly position these at your chosen seats. Thanks to this patented JetPak technology, you can upgrade the hot tub at any time to include the JetPaks with the latest jet technology.

Further advantages of JetPak technology:

- Exchangeable backrests: can be clicked into the desired position - even when the hot tub is in operation
- Individual seat depth: seats can be adapted to accommodate different body shapes and sizes
- Varied massage: up to 18 different JetPaks ensure an individual experience
- A secure investment: start with a few JetPaks and add more as and when required

Less plumbing, more power



Although the market is still holding on to outdated solutions, we are creating a new transparency: in Villeroy & Boch products, new, intelligent connections replace the seemingly endless pipes in standard hot tubs. Thanks to JetPak technology, these hot tubs have up to 90% fewer pipes.

- Minimising the risk of leaks
- Energy efficiency: most of the plumbing runs through the warm pool water so very little heat is lost
- More power thanks to shorter, direct water pipes
- As there are no diverter valves, there is full power on all seats simultaneously

JetPaks – made-to-measure individuality

Do you have back problems or muscular tension and want an individual massage of the affected area? The JetPak technology in Villeroy & Boch hot tubs provides an individual massage for specific areas of the back, effectively alleviating pain.

Sport, health, deep relaxation – you decide which of the available Flow therapies best meets your needs. From experience, we know that a combination of different massage techniques produces the best results. Select your favourites from a variety of possible and retrofittable JetPaks to meet your individual needs. All JetPaks fit every seat. Changing the JetPaks allows lots of new seat and massage constellations for great variety.



Sport Flow Therapy



Depending on the arrangement, combination and intensity of the rotating, pulsating, massaging and kneading jets, the muscles are strengthened or muscular tension released. This is achieved precisely where it's needed most: at the back of the neck, in the shoulders, the upper or middle back, or in the lumbar region.



PULSATOR

A gentle, pulsating massage

Six rotating and pulsating jets create a pleasant massage experience, helping you to relax.



DEEPRELIEF

Deep pain relief

Powerful, deep massage, providing relief even for deep-seated muscular tension.



NECKBLASTER

Maximum relaxation

Deep massage that helps to release tension in the neck and shoulders - particularly after spending a long time sitting in the office and at the computer.



ALLEVIATE

Carefully adjusted therapy

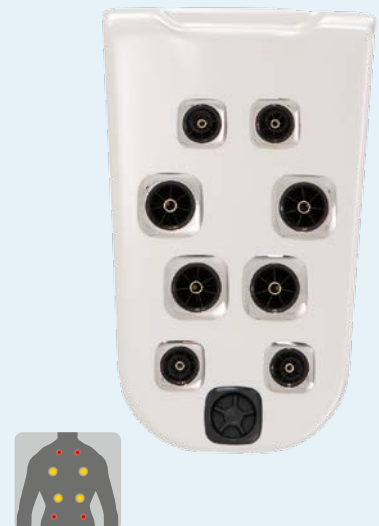
Eight targeted therapy jets, each designed to address different massage points and muscle regions in the body.



GYRO'SSAGE

A gentle, soothing feeling

Five rotating, single-pulse jets offer a rhythmical, kneading massage for the whole back, so you can float away into a calm, meditative state.



ACUTHERAPY

Targeted relaxation

Jets massage deep tissue in order to release tension, whilst others apply a gentle pressure in order to relax the shoulders and middle back.

Wellness Flow Therapy

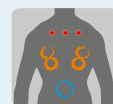


Ranging from a light and gentle massage to a powerful and deep-working kneading action, Wellness Flow Therapy relaxes both body and spirit. The stresses and strains of the day evaporate leaving you feeling relaxed and calm. Optimising the position of the neck jets is only a small change to the JetPaks but it has a big effect. Thanks to the exact arrangement of the JetPaks above the shoulders for this kind of massage, they have a healing effect.



TRIO

A gentle, pulsating massage
Six rotating and pulsating jets create a pleasant massage experience, helping you to relax.



VERSA

Carefully adjusted therapy
Eight targeted therapy jets, each designed to address different massage points and muscle regions in the body.



OSCILLATOR

Ultimate kneading massage

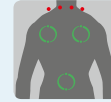
Uniform kneading massage akin to a personal masseur that kneads all the important areas of your back.



FIBRO THERAPY

Reduces pain and promotes health

A unique kneading principle eases the lower back whilst, at the same time, a deep, continuous massage at thoracic vertebrae level ensures relaxation.



NECK MASSEUSE

Targeted therapy for the neck

The special neck and shoulder jets create a powerful massage. They penetrate deep into the tissue in order to alleviate tension and release new energy - particularly after a long day in the office or at the computer.



WELLNESS

Health and wellness go hand in hand

This combination of different types of jet is extremely popular in order to create a massage experience that is suitable for everyone wanting to boost their general well-being.



CASCADIA

Waterfall with massage effect

Designed as a gentle four-point massage, this combination of jets targets your neck and shoulders with a soothing jet of water.



RELIEVER

Maximum relaxation

The deep massage for the lower back - combined with a gentle kneading of the shoulder area - relaxes both body and spirit.

Relax Flow Therapy



Enjoy the moment, experience the comforting warmth of your hot tub, the gentle tingling of an invigorating massage - with Relax Flow Therapy, mental stress simply washes away. Innovative JetPak technology paves the way for further comfort: the two-stage pumps can be switched from a power massage to a gentle relaxation massage at the push of a button. Further fine adjustments can be made on every JetPak.



RAINSHOWER

The tingle factor

A beneficial and gentle massage, which is particularly popular with women, reduces mental stress and is also good for your skin. No other hot tub can offer you anything comparable as these shower jets are only available in the JetPaks for Villeroy & Boch hot tubs.



LUMBAR

Targeted therapy for the lower back

Special pressure points in the lower back are given a deep hydromassage. This part of the back is used when lifting objects, when running and walking. Also ideal after longer car journeys.



SPINAL'SSAGE

Simply relaxed

The two rotating and pulsating jets relax the central back in particular - a simple yet highly effective massage.



SPINAL HEALTH

Powerful therapy for the back muscles

Both relaxing and invigorating at the same time, the massage of the muscles along the spine offers deep relaxation.



Modern living concepts in an architectural style

Our hot tubs look great in modern living worlds. With a minimalist look, they are at home in any environment. Their straight lines highlight their contemporary design. Fitted with innovative JetPak technology, they allow lots of scope for variations. They are also extremely adaptable in terms of colour as the acrylic tubs, outer panelling and JetPaks are available in different shades.



Just Silence – award-winning design

In its reduction to the essentials, Just Silence pays homage to contemporary architecture and is the ideal complement to modern home interiors. Thanks to its reduced form and straight lines, it becomes a design highlight on any terrace. This has earned Just Silence two awards: the iF Design Award 2015 and the Red Dot Award 2016. State-of-the-art technologies, such as touch screen operation, integrated LED light strips and high-quality materials, are all part of the overall effect. The innovative, flexible seat and lounge concept offers up to five different reclining positions and an unprecedented level of comfort in this size category.



reddot award 2016
winner







Black & White: a true classic

White reflects the light whereas black absorbs it. White creates a sense of space. Black restricts it. It is this contradiction that creates unique designs. On the chessboard, in the markings of a zebra, in calligraphy. This is why art and design love the black and white trend. The bicolour version of the hot tubs in black and white also influences style, highlighting the modern hot tub design of the Villeroy & Boch brand: available in the perfectly coordinated Black & White edition for models R6L and R7 from the Comfort Line.



Greater design freedom

The three product lines
Design Line, Premium Line and Comfort Line

Design Line

Perfection and acclaimed design



reddot award 2016
winner



Just Silence

Dimensions: 224 x 213 x 86 cm

Number of recliners/seats: 5

Premium neck cushion: 6 pieces

Weight with cover

(dry/filled to maximum fill line): 279/1767 kg

Capacity to fill line/max.: 1488/2013 l

Pump performance: one pump, 2.5 HP + additional filter pump



The straight lines create more space and, consequently, a variety of different sitting and lying combinations.

JetPak- selection



Oscillator



Pulsator



Alleviate



Spinal Health



Rainshower



Wellness

Available colour combinations:

Inside shell



Snow

Outer panelling 1



Timber

Outer panelling 2



Light Grey

Cover



Ash Grey

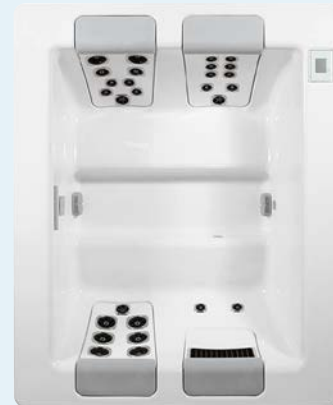
Design Line

High-tech and design in compact form



Just Silence Compact

Dimensions: 208 x 169 x 78 cm
 Number of recliners/seats: 3
 Premium neck cushion: 4 pieces
 Weight with cover
 (dry/filled to maximum fill line): 206/1456 kg
 Capacity to fill line/max.: 947 l/1299 l
 Pump performance: one pump, 2.5 HP + additional filter pump



JetPak- selection



Oscillator

Pulsator

Alleviate

Spinal Health

Rainshower

Wellness

Available colour combinations:

Inside shell



Snow

Outer panelling 1



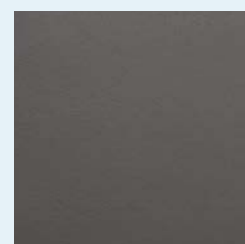
Timber

Outer panelling 2



Light Grey

Cover



Ash Grey

A8

8-person hot tub for sharing the leisure experience with family and friends.

Dimensions: 239 x 239 x 97 cm

Number of recliners/seats: 0/8

Premium neck cushion: 6 pieces

Weight with cover

(dry/filled to maximum fill line): 344/2388 kg

Capacity to fill line / max.: 2049/2563 l

Pump performance: two pumps, 2 HP



A8L

6-person hot tub with a large number of individual massage possibilities.

Dimensions: 239 x 239 x 97 cm

Number of recliners/seats: 1/5

Premium neck cushion: 6 pieces

Weight with cover

(dry/filled to maximum fill line): 353/2388 kg

Capacity to fill line / max.: 2044/2503 l

Pump performance: two pumps, 2 HP



A8D

5-person hot tub with two very comfortable and differently-shaped recliners with a maximum range of equipment.

Dimensions: 239 x 239 x 97 cm

Number of recliners/seats: 2/3

Premium neck cushion: 5 pieces

Weight with cover

(dry/filled to maximum fill line): 346/2284 kg

Capacity to fill line/max.: 1938/2450 l

Pump performance: two pumps, 2 HP



A7

6-person hot tub with four particularly comfortable corner seats for optimum communication.

Dimensions: 224 x 224 x 91 cm

Number of recliners/seats: 0/6

Premium neck cushion: 5 pieces

Weight with cover

(dry/filled to maximum fill line): 300/1943 kg

Capacity to fill line/max.: 1643/2111 l

Pump performance: two pumps, 2 HP



A7L

6-person hot tub with diverse massage options and special leg and hip jets.

Dimensions: 224 x 224 x 91 cm

Number of recliners/seats: 1/5

Premium neck cushion: 5 pieces

Weight with cover

(dry/filled to maximum fill line): 308/1974 kg

Capacity to fill line/max.: 1666/2067 l

Pump performance: two pumps, 2 HP



A6L

5-person hot tub. Thanks to the reduced external dimensions, ideal for terraces and balconies. The spacious interior is particularly suitable for a family with two children.

Dimensions: 203 x 224 x 86 cm

Number of recliners/seats: 1/4

Premium neck cushion: 4 pieces

Weight with cover

(dry/filled to maximum fill line): 261/1565 kg

Capacity to fill line/max.: 1324/1804 l

Pump performance: one pump, 2.5 HP



A5L

3-person hot tub. Thanks to its compact dimensions, it fits through most doors and is thus particularly suitable for indoor installation. Perfect for couples - also with one child.

Dimensions: 173 x 213 x 79 cm

Number of recliners/seats: 1/2

Premium neck cushion: 3 pieces

Weight with cover



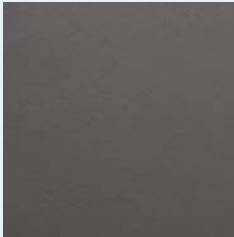







(dry/filled to maximum fill line): 206/1126 kg

Capacity (to fill line)/max.: 920/1250 l

Pump performance: one pump, 2.5 HP



Colour combinations that are available for immediate delivery

	Inside shell	Outer panelling	Cover
Variant 1			
	Titanium	Timber	Ash Grey
Variant 2			
	Pearl	Orchard	Chocolate
A9L colour combination			
	Titanium	Timber	Ash Grey

Comfort Line

Designed for comfort



R8L

5-person hot tub with a large number of individual massage possibilities.

Dimensions: 239 x 239 x 97 cm

Number of recliners/seats: 1/5

Comfort neck cushion: 4 pieces

Weight with cover

(dry/filled to maximum fill line): 353/2690 kg

Capacity to fill line/max.: 1984 l/2408 l

Pump performance: two pumps, 2 HP



R7

6-person hot tub with four particularly comfortable corner seats.

Dimensions: 224 x 224 x 91cm

Number of recliners/seats: 0/6

Comfort neck cushion: 4 pieces

Weight with cover

(dry/filled to maximum fill line): 300/1935 kg

Capacity to fill line/max.: 1635 l/2051 l

Pump performance: two pumps, 2 HP



R7L

5-person hot tub with four particularly comfortable corner seats.

Dimensions: 224 x 224 x 91 cm

Number of recliners/seats: 1/5

Comfort neck cushion: 4 pieces

Weight with cover

(dry/filled to maximum fill line): 308/1921 kg

Capacity to fill line/max.: 1613 l/2029 l

Pump performance: two pumps, 2 HP



R6L

5-person hot tub. With its reduced dimensions, it is ideal for terraces and balconies and also suitable for young families.

Dimensions: 203 x 224 x 86 cm

Number of recliners/seats: 1/4

Comfort neck cushion: 3 pieces

Weight with cover

(dry/filled to maximum fill line): 261/1556 kg

Capacity to fill line/max.: 1295 l/1766 l

Pump performance: one pump, 2.5 HP (optional 2 x 2 HP)



R5L

3-person hot tub. Thanks to the compact dimensions, it is also suitable for indoor installation as it fits through most doors.

Dimensions: 173 x 213 x 79 cm

Number of recliners/seats: 1/2

Comfort neck cushion: 2 pieces

Weight with cover

(dry/filled to maximum fill line): 206/1096 kg

Capacity to fill line/max.: 890 l/1212 l

Pump performance: one pump, 2.5 HP



Colour combination available for immediate delivery:

Inside shell



Snow

Outer panelling



Stone Grey

Cover



Ash Grey

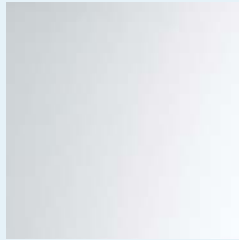
Stylishly combined, available for immediate delivery:

Black & White Edition



Only available for the models R6L and R7. JetPaks in Dark Grey.

Inside shell



Snow

Outer panelling



Stone Grey

Cover



Ash Grey

Stylish accessories for all hot tubs:



Easy Coverlifter - to facilitate covering and uncovering the hot tub

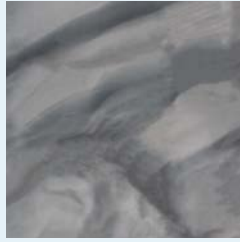


Hydro Coverlifter - for practical protection

Hot tub steps - available in grey, brown or mahogany



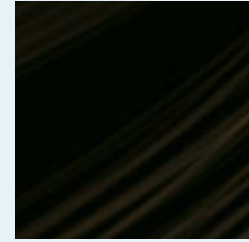
Inside shell ¹⁾



Cloud ²⁾



Granite



Midnight Canyon



Pearl



Platinum



Snow ^{2) 5)}

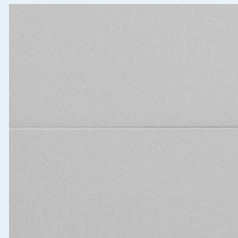


Titanium

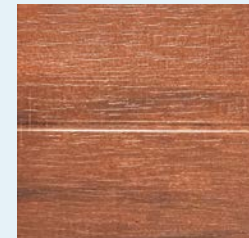
Outer panelling ¹⁾



Chestnut ²⁾



Light Grey ^{2) 3)}



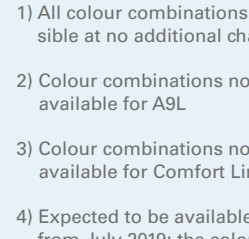
Orchard ³⁾



Stone Grey ²⁾



Timber ³⁾



Wildwood ⁴⁾

Cover ¹⁾



Ash Grey



Chocolate ⁴⁾

1) All colour combinations possible at no additional charge

2) Colour combinations not available for A9L

3) Colour combinations not available for Comfort Line

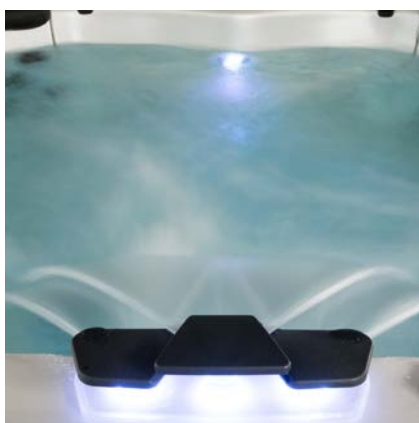
4) Expected to be available from July 2019; the colour Wildwood will be supplied in the meantime

5) A9L in Snow available from mid-2019

If you'd like a different colour combination or different-coloured JetPaks for your Premium or Comfort Line hot tub, we'll be happy to customise a hot tub for you – at no additional charge.

All models and their special features

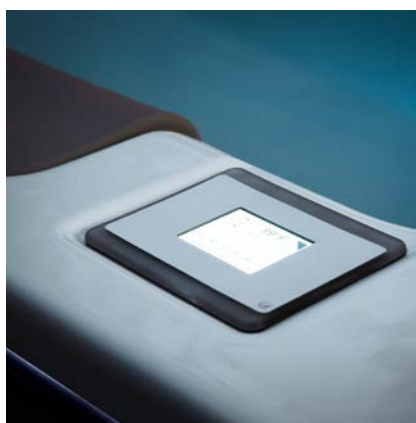
High tech comfort:



Illuminated waterfall



Atmospheric exterior lighting



Illuminated touch screen panel



Easy programming via smartphone



Control system by means of colour screen

Design Line

Standard equipment:

- Innovative JetPak technology
- Maintenance-free support structure, EnduraFrame™
- Modern LED interior lighting
- Two-stage pumps
- Energy-saving full-foam insulation

Design Line extras:

- Stylish touch screen control system
- Exclusive massage jets in stainless steel featuring a matt brushed finish
- Programmable exterior lighting
- 5-person lounger concept

Premium Line

Standard equipment:

- Innovative JetPak technology
- Maintenance-free support structure, EnduraFrame™
- Modern LED interior lighting
- Two-stage pumps
- Energy-saving full-foam insulation

Premium Line extras:

- Maximum number of JetPaks
- Stylish massage jets in stainless steel look
- Premium control system with colour screen
- Cascadia waterfall
- Integral Premium cushion
- Illuminated cup holder
- Exterior lighting

Comfort Line

Standard equipment:

- Innovative JetPak technology
- Maintenance-free support structure, EnduraFrame™
- Modern LED interior lighting
- Two-stage pumps
- Energy-saving full-foam insulation

Comfort Line extras:

- Comfort controls
- Stylish synthetic massage jets
- Comfort cushion
- Comfort water feature

3 seater



Just Silence Compact,
208 x 169 x 78 cm



5 seater



Just Silence,
224 x 213 x 86 cm



3 seater



A5L
173 x 213 x 79 cm



5 seater



A6L
203 x 224 x 86 cm



5 seater



A8D
239 x 239 x 97 cm



6 seater



A7
224 x 224 x 91 cm



6 seater



A8L
239 x 239 x 97 cm



8 seater



A8
239 x 239 x 97 cm



A7L
224 x 224 x 91 cm



A9L
239 x 239 x 97 cm



3 seater



R5L
173 x 213 x 79 cm



5 seater



R6L
203 x 224 x 86 cm



6 seater



R7
224 x 224 x 91 cm



6 seater



R8L
239 x 239 x 97 cm



R7L
224 x 224 x 91 cm



Clean water

Top filter quality

Ultra-modern dual-filter system

Our hot tubs have a dual-filter system with Microban® technology that disinfects the filter media.

High-tech down to the last detail

With programmable filter cycles, an intelligent water management system and automatic deactivation of the ozonator during use, these hot tubs offer maximum safety, comfort and hygiene.

Incredibly quiet. Operates quietly and almost without vibration

The special performance of the circulation pumps enables an extremely high filtration performance of up to 250 times per day. This ensures optimum rinsing of all areas of the hot tub, including the area behind each JetPak – whilst the pumps continue to work extremely quietly in the background.

Low-maintenance. Ozone reduces the number of chemicals

The ozonator fitted as standard ensures impeccable water quality and exemplary hygiene. It is absolutely maintenance-free and reduces the number of chemicals, such as chlorine.

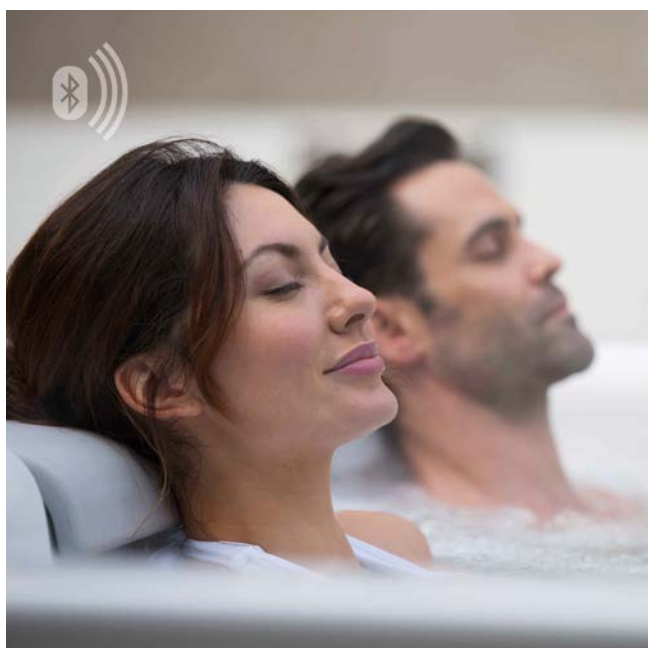


The original filter sets offer a number of important advantages

- They prevent small objects from being sucked into the piping system
- They keep children away from the suction area
- Cleaning tablets can be placed safely under the screw-on cap.

The filter basket protects the heating and the pump: after removing the filter, the filter basket prevents small objects from being sucked into the piping system.

Hot tub audio systems



The Premium, Comfort or Design audio systems are available for the respective hot tub categories. All the audio systems offer the same high standard of performance and are fully integrated into the hot tubs, together with stereo loudspeakers. The systems are operated via the corresponding hot tub control systems. Bluetooth is integrated, enabling the transfer of music data or radio. Subwoofers round off the full sound.

VILLEROY & BOCH

GERMANY

Villeroy & Boch AG

Unternehmensbereich Bad und Wellness

Hauptverwaltung

Postfach 11 22

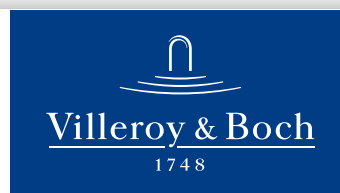
66693 Mettlach

Tel. +49 (0) 6864-81-0

Fax +49 (0) 6864-81-1516

93000048 - 2016 Printed in Germany - Shades and dimensions subject to the usual tolerances. We reserve the right to make technical modifications to the range and alter colours.

Your sales consultant



www.parsital.com

WWW.VILLEROY-BOCH.COM